

# DH-72M Series 360-380W

Monocrystalline Silicon Module



Advanced processing techniques realize great module efficiency to a maximum of 19.58%, steady power output guaranteed



0~+5W Positive tolerance delivers higher output reliability



Excellent performance even under low-light settings, such as dawn, dusk and cloudy day

**PID**

Advanced cell technology and qualified materials lead to high resistance to PID

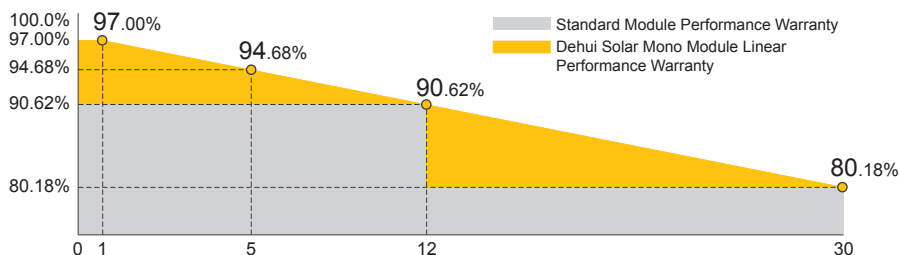


Excellent mechanical load resistance: wind loads (2400Pa) & snow loads (5400Pa)



Reliable quality leads to a better sustainability even in harsh environment like desert, farm and coastline

## LINEAR PERFORMANCE WARRANTY



Product Material  
& Workmanship

**12** YEAR  
WARRANTY

Linear  
Performance

**30** YEAR  
WARRANTY

# DH-72M Series 360-380W

Monocrystalline Silicon Module

| ELECTRICAL PROPERTIES   STC*    | DH-72M-360    | DH-72M-365 | DH-72M-370 | DH-72M-375 | DH-72M-380 |
|---------------------------------|---------------|------------|------------|------------|------------|
| Peak Power (Pmax   W)           | 360           | 365        | 370        | 375        | 380        |
| MPP Voltage (Vmp   V)           | 39.90         | 40.30      | 40.60      | 40.90      | 41.20      |
| MPP Current (Imp   A)           | 9.03          | 9.07       | 9.11       | 9.17       | 9.22       |
| Open Circuit Voltage (Voc   V)  | 47.80         | 48.10      | 48.40      | 48.70      | 49.00      |
| Short Circuit Current (Isc   A) | 9.61          | 9.66       | 9.71       | 9.77       | 9.82       |
| Module Efficiency (%)           | 18.55         | 18.81      | 19.07      | 19.33      | 19.58      |
| Power Tolerance                 | 0~+5W         |            |            |            |            |
| Operating Temperature           | -40°C ~ +85°C |            |            |            |            |
| Maximum System Voltage          | 1500V (IEC)   |            |            |            |            |
| Maximum Series Fuse Rating      | 15A           |            |            |            |            |
| Fire Safety                     | Class C       |            |            |            |            |

\*STC (Standard Test Condition): Irradiance 1000W/m², Cell Temperature 25°C, AM 1.5

| ELECTRICAL PROPERTIES   NOCT*   | DH-72M-360 | DH-72M-365 | DH-72M-370 | DH-72M-375 | DH-72M-380 |
|---------------------------------|------------|------------|------------|------------|------------|
| Peak Power (Pmax   W)           | 267        | 271        | 274        | 278        | 281        |
| MPP Voltage (Vmp   V)           | 36.40      | 36.70      | 37.00      | 37.30      | 37.60      |
| MPP Current (Imp   A)           | 7.33       | 7.38       | 7.43       | 7.48       | 7.53       |
| Open Circuit Voltage (Voc   V)  | 44.20      | 44.40      | 44.60      | 44.80      | 45.00      |
| Short Circuit Current (Isc   A) | 7.79       | 7.84       | 7.89       | 7.94       | 7.99       |

\*NOCT (Nominal Operating Cell Temperature): Irradiance 800W/m², Ambient Temperature 20°C, AM 1.5, Wind Speed 1m/s

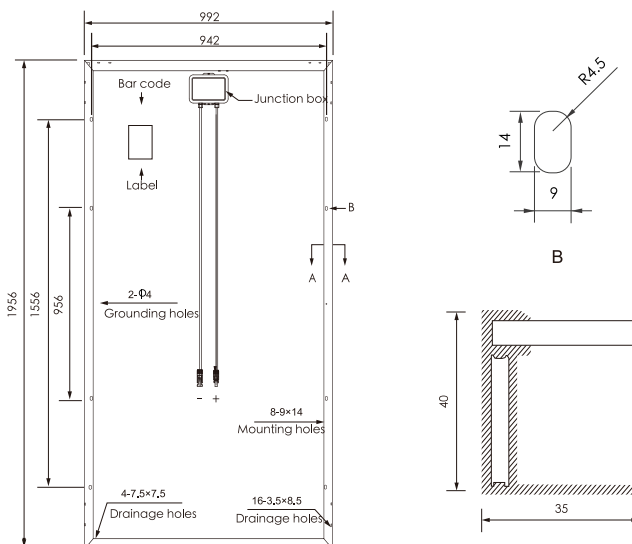
| MECHANICAL PROPERTIES |                               |
|-----------------------|-------------------------------|
| Cell Type             | Mono Cell (156.75 x 156.75mm) |
| Number of Cells       | 6 x 12 (72pcs)                |
| Dimension             | 1956x992x40mm                 |
| Weight                | 23.0kg                        |
| Front/Rear Glass      | 3.2mm Tempered Glass          |
| Frame                 | Anodized Aluminium Alloy      |
| Junction Box          | IP67, 3 Diodes                |
| Cable Type            | 4.0 mm²                       |
| Length of Cable       | 1200mm                        |
| Connector             | MC4 Compatible                |

| TEMPERATURE COEFFICIENT        |            |
|--------------------------------|------------|
| Temp. Coeff. of Pmax (TK Pmax) | -0.390%/°C |
| Temp. Coeff. of Voc (TK Voc)   | -0.300%/°C |
| Temp. Coeff. of Isc (TK Isc)   | 0.05%/°C   |
| NOCT                           | 45±2°C     |

| PACKING MANNER   |      |      |
|------------------|------|------|
| Packing Type     | 20GQ | 40HQ |
| Piece/Pallet     | 26   | 26   |
| Pallet/Container | 10   | 22   |
| Piece/Container  | 260  | 572  |

\* The specification and key features described in this datasheet may deviate slightly and are not guaranteed. Due to ongoing innovation, R&D enhancement, Dehui Solar reserves the right to make any adjustment to the information described herein at any time without notice. Please always obtain the most recent version of the datasheet which shall be duly incorporated into the binding contract made by the parties governing all transactions related to the purchase and sale of the products described herein.

## ENGINEERING DRAWING (unit: mm)



## I-V CURVES

