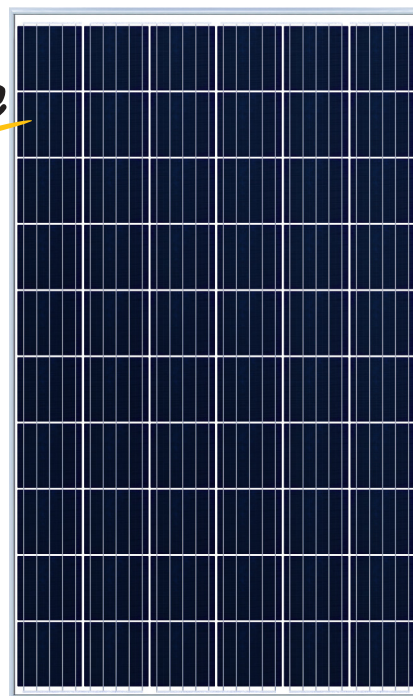


DH-60P Series 270-290W

Polycrystalline Silicon Module



Advanced processing techniques realize great module efficiency to a maximum of 17.83%, steady power output guaranteed



0~+5W Positive tolerance delivers higher output reliability



Excellent performance even under low-light settings, such as dawn, dusk and cloudy day

PID

Advanced cell technology and qualified materials lead to high resistance to PID

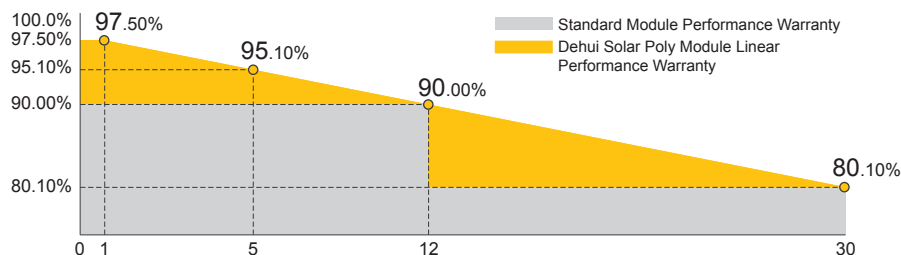


Excellent mechanical load resistance: wind loads (2400Pa) & snow loads (5400Pa)



Reliable quality leads to a better sustainability even in harsh environment like desert, farm and coastline

LINEAR PERFORMANCE WARRANTY



Product Material
& Workmanship

12 YEAR
WARRANTY

Linear
Performance

30 YEAR
WARRANTY

DH-60P Series 270-290W

Polycrystalline Silicon Module

ELECTRICAL PROPERTIES STC*	DH-60P-270	DH-60P-275	DH-60P-280	DH-60P-285	DH-60P-290
Peak Power (Pmax W)	270	275	280	285	290
MPP Voltage (Vmp V)	31.30	31.70	32.00	32.30	32.60
MPP Current (Imp A)	8.63	8.69	8.76	8.83	8.90
Open Circuit Voltage (Voc V)	38.50	38.70	39.00	39.30	39.60
Short Circuit Current (Isc A)	9.08	9.16	9.24	9.29	9.35
Module Efficiency (%)	16.60	16.90	17.21	17.52	17.83
Power Tolerance	0~+5W				
Operating Temperature	-40°C ~ +85°C				
Maximum System Voltage	1500V (IEC)				
Maximum Series Fuse Rating	15A				
Fire Safety	Class C				

*STC (Standard Test Condition): Irradiance 1000W/m², Cell Temperature 25°C, AM 1.5

ELECTRICAL PROPERTIES NOCT*	DH-60P-270	DH-60P-275	DH-60P-280	DH-60P-285	DH-60P-290
Peak Power (Pmax W)	199	203	207	210	213
MPP Voltage (Vmp V)	28.90	29.20	29.40	29.70	29.90
MPP Current (Imp A)	6.90	6.97	7.04	7.08	7.12
Open Circuit Voltage (Voc V)	35.50	35.70	36.00	36.20	36.40
Short Circuit Current (Isc A)	7.36	7.42	7.49	7.53	7.57

*NOCT (Nominal Operating Cell Temperature): Irradiance 800W/m², Ambient Temperature 20°C, AM 1.5, Wind Speed 1m/s

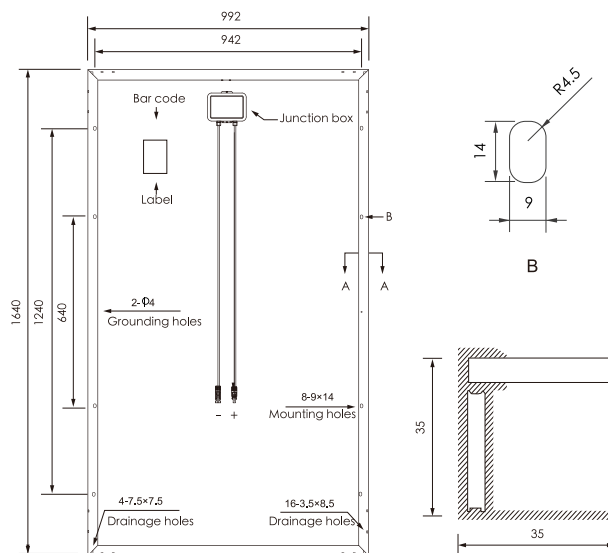
MECHANICAL PROPERTIES	
Cell Type	Poly Cell (156.75 x 156.75mm)
Number of Cells	6 x 10 (60pcs)
Dimension	1640x992x35mm
Weight	18.0kg
Front/Rear Glass	3.2mm Tempered Glass
Frame	Anodized Aluminium Alloy
Junction Box	IP67, 3 Diodes
Cable Type	4.0 mm²
Length of Cable	1000mm
Connector	MC4 Compatible

TEMPERATURE COEFFICIENT	
Temp. Coeff. of Pmax (TK Pmax)	-0.390%/°C
Temp. Coeff. of Voc (TK Voc)	-0.300%/°C
Temp. Coeff. of Isc (TK Isc)	0.05%/°C
NOCT	45±2°C

PACKING MANNER		
Packing Type	20GQ	40HQ
Piece/Pallet	30	30
Pallet/Container	12	28
Piece/Container	360	840

* The specification and key features described in this datasheet may deviate slightly and are not guaranteed. Due to ongoing innovation, R&D enhancement, Dehui Solar reserves the right to make any adjustment to the information described herein at any time without notice. Please always obtain the most recent version of the datasheet which shall be duly incorporated into the binding contract made by the parties governing all transactions related to the purchase and sale of the products described herein.

ENGINEERING DRAWING (unit: mm)



I-V CURVES

