

1922 **100** 2022



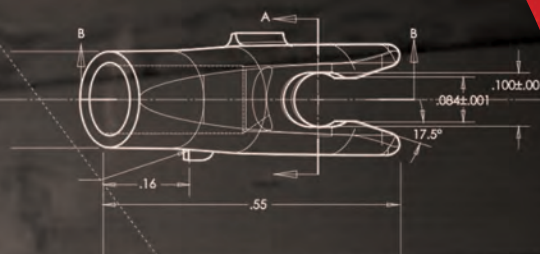
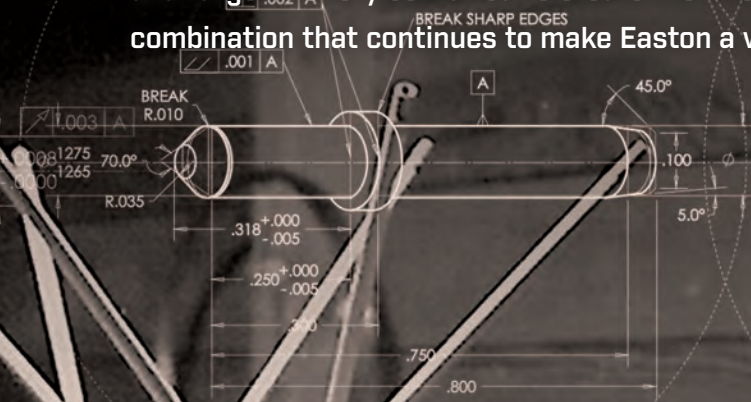
 **EASTON**<sup>®</sup>  
HUNTING 2022



## Three arrows are displayed vertically against a black background. The leftmost arrow has a light-colored shaft with a red band, a blue band, and a red band, and a red feather. The middle arrow has a white shaft with a yellow band and a white feather. The rightmost arrow has a light-colored shaft with a blue band and a yellow feather. The arrows are arranged in a slightly overlapping manner.





[illegible]





NEW 4MM FMJ



# TAKE A SHORT CUT TO THE END OF THE BLOOD TRAIL.

## NEW 4MM FULL METAL JACKET™

Bowhunting's flagship arrow—get the highest level of penetration ever offered to bowhunters. Patented carbon/aluminum construction guarantees power and accuracy. Includes Easton 4mm nocks and F.O.C. boosting 8-32 half-outs. Sizes 250, 300, 340, and 400 in both standard straightness and in the ultra-precise  $\pm .001$  Match-Grade. Made in USA

*Get the unstoppable power of FMJ—see your Easton dealer today.*







4 MM

# 4MM FULL METAL JACKET™

+FMJ MATCH GRADE

4mm micro-diameter carbon core with 7075 alloy metal jacket

Pre-installed 4mm Microlite™ nocks

8/32 4MM aluminum half-out inserts included for optimum FOC for hunting

Easy target pull

Straightness  $\pm.002"$  (Match Grade  $\pm.001"$ )



## INCLUDED



**4MM 8-32 Aluminum Half-Out**  
(50 grains)

Uses 8-32 thread 5/16" field points



**4mm MicroLite™ Nock**  
(6 grains)

## SOLD SEPARATELY



**8-32 Multi Point**  
(100, & 125 grains)



**Deep Six™ Steel Field Points**  
(100 grains)



**4MM Titanium Half-Out**  
(55 grains)  
Uses 8-32 thread 5/16" field points



**4MM Steel Half-Out**  
(95 grains)  
Uses 8-32 thread 5/16" field points



**4MM (G) Deep Six™ Steel HIT Insert**  
(20 grains)

NEW



SIZE	SHAFT WEIGHT	SPINE @ 28" SPAN	STOCK LENGTH	DEEP SIX FIELD POINT	O.D	4MM HALFOUT
	GPI	Deflection in Inches	Inches	100 Grains (optional)	Inches	Size
400	9.8	0.400	31.5	DP6-5	0.234	#2
340	11.0	0.340	32	DP6-5	0.240	#3
300	11.7	0.300	32.5	DP6-6	0.244	#4
250	12.3	0.250	33	DP6-6	0.247	#5



5 MM

# 5MM FULL METAL JACKET™

+FMJ MATCH GRADE +DANGEROUS GAME +DANGEROUS GAME

5mm small-diameter carbon core with 7075-alloy metal jacket

Pre-installed 5mm (X) nocks

5MM HIT 8-32 inserts included

Easy target pull

Straightness  $\pm.002"$  (Match Grade  $\pm.001"$ )



## INCLUDED



**5MM HIT® Insert**  
(16 grains)



**5MM X Nock™**  
(9 grains)

## SOLD SEPARATELY



**8-32 Multi Point**  
(100, & 125 grains)



**Broadhead Adapter Ring**



**5MM Steel 8-32 Half-out**  
(75 grains)



**5MM Aluminum 8-32 Half-out**  
(25 grains)



**5MM Brass HIT® Break-off 8-32 Insert**  
(Adjustable to 75-50 grains)



SIZE	SHAFT WEIGHT	SPINE @ 28" SPAN	STOCK LENGTH	FIELD POINT	BROADHEAD ADAPTER RING	O.D.	HALF OUT
	GPI	Deflection in Inches	Inches	O.D. Inches	Size (5 grains)	Inches	Size
500	9.1	0.500	31	17/64	BAR3	0.256	#1
400	10.2	0.400	31.5	17/64	BAR3	0.263	#2
340	11.3	0.340	32	9/32	BAR5	0.269	#2
300	12.0	0.300	32.5	9/32	BAR5	0.273	#2
250	11.5	0.250	33	9/32	BAR5	0.273	#2
250*	17.7	0.250	32.5	19/64	NA	0.290	NA

\* Dangerous Game



6 MM

# 6MM FULL METAL JACKET™

6MM reduced-diameter carbon core with 7075-alloy metal jacket

Pre-installed 6MM [H] nocks

6MM ST RPS 8-32 inserts

Easy target pull

Straightness:  $\pm.003"$



## INCLUDED



**6MM ST RPS™ 8-32 Insert**  
[18 grains]



**6MM H Nock™**  
[9 grains]

## SOLD SEPARATELY



**6MM Brass Break-Off 8-32 Insert**  
[Adjustable to 75-50 grains]



**8-32 Multi Point**  
[100, 6 125 grains]

SIZE	SHAFT WEIGHT	SPINE @ 28" SPAN	STOCK LENGTH	FIELD POINT	O.D.	ST INSERT
	GPI	Deflection in Inches	Inches	O.D. Inches	Inches	Size
470	8.8	0.470	31	9/32	0.277	#2
390	9.7	0.390	31.5	9/32	0.281	#2
320	10.6	0.320	32	9/32	0.287	#2





6-4 MM

# T64 FULL METAL JACKET™



Built-in FOC front taper adds up to 30% more FOC versus conventional parallel shafts

Available in two deflection factor sizes that cover the full range of arrow spines from 400 through 300 and shaft lengths from 26" to 32"

RPS Inserts with 8-32 point and broadhead compatibility

Straightness:  $\pm .001$ "



## INCLUDED



**4MM MicroLite™ Nock**  
(6 grains)



**T64™ RPS™ Insert**  
18 grains

## SOLD SEPARATELY



**8-32 Multi Point**  
(100, & 125 grains)

The T64 FMJ shaft profile features a 6mm point-end then seamlessly tapers down to a micro 4mm diameter at the nock end. This unique profile provides an integrated front-of-center (FOC) weight distribution that ensures more accurate arrow flight. The 4MM nock end greatly reduces friction in flight and through the target to maximize penetration.



SIZE	SHAFT WEIGHT	SPINE DEFLECTION	STOCK LENGTH	8-32 FIELD POINT
	GPI AVG.	Deflection Factor	Inches	100/125 Grains
7.9	13.3	DF 7.9 (320)	32	5/16
9.5	12.2	DF 9.5 (380)	30	5/16

The logo for Axis Long Range, featuring the word "AXIS" in a stylized, italicized font with a horizontal line through the middle of the letters.

4MM AXIS  
LONG RANGE

# CUT YOUR NEXT LONG SHOT DOWN TO SIZE.

A close-up image of an Easton 4mm Axis Long Range arrow, showing the green and black finish and the "AXIS LONG RANGE" branding.

## 4MM AXIS LONG RANGE™

A lighter weight micro 4mm diameter gives you more speed and reduces friction to add more broadhead penetration. Includes Easton 4mm nocks and 8-32 half-outs to add accuracy and F.O.C. Made with light weight Acu-carbon for a higher ballistic coefficient and more velocity. Sizes 250, 300, 340, and 400 in both standard and ultra-precise Match-Grade models. Made in USA

*Make your shot one to remember—get AXIS Long Range today.*





4 MM

# 4MM AXIS™

## LONG RANGE +MATCH GRADE

4MM micro-diameter uniform ACU-CARBON fiber construction

Pre-installed 4MM Microlite™ nocks

8/32 4MM aluminum half-out included for optimum hunting FOC

Straightness: ±.003" (Match Grade: ±.001")



### INCLUDED NEW



**4MM 8-32 Aluminum Half-out**  
(50 grains)

Uses 8-32 thread 5/16" field points



**4MM MicroLite™ Nock**  
(6 grains)

### SOLD SEPARATELY



**8-32 Multi Point**  
(100, & 125 grains)



**Deep Six™ Steel Field Points**  
(100 grains)



**4MM Steel Half-Out**  
(95 grains)

Uses 8-32 thread 5/16" field points



**4MM Titanium Half-Out**  
(55 grains)

Uses 8-32 thread 5/16" field points



**4MM Deep Six™ Steel HIT Insert**  
(20 grains)

NEW

SIZE	SHAFT WEIGHT	SPINE @ 28" SPAN	STOCK LENGTH	DEEP SIX FIELD POINT	O.D	4MM HALFOUT
	GPI	Deflection in Inches	Inches	100 Grains (optional)		Size
250	9.8	0.250	33	DP6-6	0.244	#4
300	9.3	0.300	32.5	DP6-6	0.241	#3
340	8.3	0.340	32	DP6-4	0.234	#2
400	7.5	0.400	31.5	DP6-4	0.229	#1





5 MM

# 5MM AXIS™

+MATCH GRADE

- 5MM small-diameter uniform ACU-CARBON

Pre-installed 5MM [X] nocks

5MM HIT 8-32 inserts included

Straightness ±.003" (Match Grade: ±.001")



## INCLUDED



**5MM HIT® Insert**  
[16 grains]



**5MM X Nock™**  
[9 grains]

## SOLD SEPARATELY



**8-32 Multi Point**  
[100, & 125 grains]



**Broadhead Adapter Ring**



**5MM Brass HIT® Break-off  
8-32 Insert**  
[Adjustable to 75-50 grains]



**5MM Aluminum 8-32 Half-out**  
[25 grains]



**5MM Steel 8-32 Half-out**  
[75 grains]



SIZE	SHAFT WEIGHT	SPINE @ 28" SPAN	STOCK LENGTH	FIELD POINT	BROADHEAD ADAPTER RING	O.D.	5MM HALF OUT
	GPI	Deflection in Inches	Inches	O.D. Inches	Size (5 grains)	Inches	Size
700	6.1	0.700	31.5	17/64	BAR3	0.245	#1
600	7.2	0.600	30.5	17/64	BAR3	0.253	#1
500	8.1	0.500	31	17/64	BAR3	0.258	#1
400	9.0	0.400	31.5	17/64	BAR4	0.264	#2
340	9.5	0.340	32	9/32	BAR5	0.267	#2
300	10.7	0.300	32.5	9/32	BAR6	0.275	#2
260	11.5	0.260	34*	9/32	BAR6	0.280	#2
200	12	0.200	34*	9/32	BAR6	0.280	#2

NEW

5 MM

# 5MM AXIS™ SPORT



5MM small-diameter uniform ACU-CARBON

Pre-installed 5MM (X) nocks

5MM 8-32 aluminum half-out included

Straightness  $\pm .005"$



## INCLUDED



**5MM X Nock™**  
[9 grains]



**5MM Aluminum 8-32  
Half-out**  
[25 grains]



**8-32 Multi Point**  
[100, & 125 grains]



**5MM Steel 8-32 Half-out**  
[75 grains]



**5MM Brass HIT® Break-off  
8-32 Insert**  
[Adjustable to 75-50 grains]



**5MM HIT® Insert**  
[16 grains]

SIZE	SHAFT WEIGHT GPI	SPINE @ 28" SPAN Deflection in Inches	STOCK LENGTH Inches	FIELD POINT O.D. Inches	BROADHEAD ADAPTER RING Size (5 grains)	O.D. Inches	5MM HALF OUT Size
700	6.1	0.700	31.5	17/64	BAR3	0.245	#1
600	7.2	0.600	30.5	17/64	BAR3	0.253	#1
500	8.1	0.500	31	17/64	BAR3	0.258	#1
400	9.0	0.400	31.5	17/64	BAR4	0.264	#2
340	9.5	0.340	32	9/32	BAR5	0.267	#2
300	10.7	0.300	32.5	9/32	BAR6	0.275	#2
260	11.5	0.260	34*	9/32	BAR6	0.280	#2



5 MM

# 5MM AXIS™ TRADITIONAL

5MM uniform USA made ACU-CARBON

Pre-installed 5MM [X] nocks

5MM HIT 8-32 inserts included

Straightness  $\pm .003"$

Wood Grain Graphics



## INCLUDED



**5MM HIT® Insert**  
(16 grains)



**5MM X Nock™**  
(9 grains)

## SOLD SEPARATELY



**8-32 Multi Point**  
(100, & 125 grains)



**5MM Steel 8-32 Half-out**  
(75 grains)



**5MM Brass HIT® Break-off  
8-32 Insert**  
(Adjustable to 75-50 grains)



**5MM Aluminum 8-32 Half-out**  
(25 grains)



**Broadhead Adapter Ring**



SIZE	SHAFT WEIGHT	SPINE @ 28" SPAN	STOCK LENGTH	RPS POINT	BROADHEAD ADAPTER RING	O.D.	5MM HALF OUT
	GPI	Deflection in Inches	Inches	O.D. Inches	Size (5 grains)	Inches	Size
700	6.8	0.700	31.5	17/64	BAR3	0.245	#1
600	7.9	0.600	32.25	17/64	BAR3	0.253	#1
500	8.9	0.500	32.5	17/64	BAR3	0.261	#1
400	9.8	0.400	32.75	9/32	BAR4	0.267	#2
340	10.3	0.340	33	9/32	BAR5	0.270	#2

4 MM

# AC PROCOMP™

Target precision in a hunting shaft

Four sizes configured for hunting

4MM micro diameter aluminum core with outer carbon layer

Straightness  $\pm .0015"$

4MM 8-32 aluminum half-out inserts included

4MM Microlite nocks included



## INCLUDED



**4MM MicroLite™ Nock**  
[6 grains]



**4MM 8-32 Aluminum Half-Out**  
[50 grains]  
Uses 8-32 thread 5/16" field points

NEW

## SOLD SEPARATELY



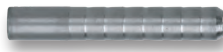
**8-32 Multi Point**  
[100, & 125 grains]



**4MM Steel Half-Out**  
[95 grains]  
Uses 8-32 thread 5/16" field points



**Titanium Half-Out**  
[55 grains]  
Uses 8-32 thread 5/16" field points



**4MM Deep Six™ Steel HIT Insert**  
[20 grains]



SIZE	SHAFT WEIGHT	SPINE @ 28" SPAN	STOCK LENGTH	RPS POINT	O.D.	4MM HALFOUT
	GPI	Deflection in Inches	Inches	O.D. Inches	Inches	Size
250	10.8	0.250	34	5/16	0.245	#4
300	9.5	0.300	33.63	5/16	0.236	#2
340	8.9	0.340	33.63	5/16	0.231	#1
380	8.3	0.380	32.62	5/16	0.227	#1



NEW

6 MM

## SONIC 6.0™

- 6mm reduced-diameter higher velocity 100% carbon fiber
- Factory helical fletched w/ 2" Bully Vanes
- Pre-installed 6mm nocks
- 6mm ST Inserts included
- Straightness +/- .003"
- Made in USA



Factory helical fletch optimizes  
broadhead control for accuracy.

## INCLUDED



**6MM ST RPS™ 8-32 Insert**  
(18 grains)



**6MM H Nock™**  
(9 grains)

## SOLD SEPARATELY



**6MM Brass Break-Off 8-32 Insert**  
(Adjustable to 75-50 grains)



**8-32 Multi Point**  
(100, & 125 grains)

SIZE	SHAFT WEIGHT	SPINE @ 28" SPAN	STOCK LENGTH	RPS POINT	O.D.	6MM ST INSERT
	GPI	Deflection in Inches	Inches	O.D. Inches	Inches	Size
250	9.5	0.250	32.5	9/64	0.291	#2
300	8.8	0.350	32	9/64	0.286	#2
340	7.8	0.340	31.5	9/64	0.279	#2
400	7.2	0.400	31	9/32	0.275	#1
500	6.7	0.500	30.5	9/32	0.273	#1
600	5.8	0.600	30.5	N/A	0.268	#1

6.5 MM

# EASTON 6.5™

**MATCH GRADE • HUNTER CLASSIC • BOWHUNTER  
+READY TO SHOOT JUNIOR**

6.5MM uniform USA made ACU-CARBON

Pre-installed 6.5MM Microlite™ nocks

6.5MM or CB inserts included

MATCH GRADE Straightness  $\pm .001$ "

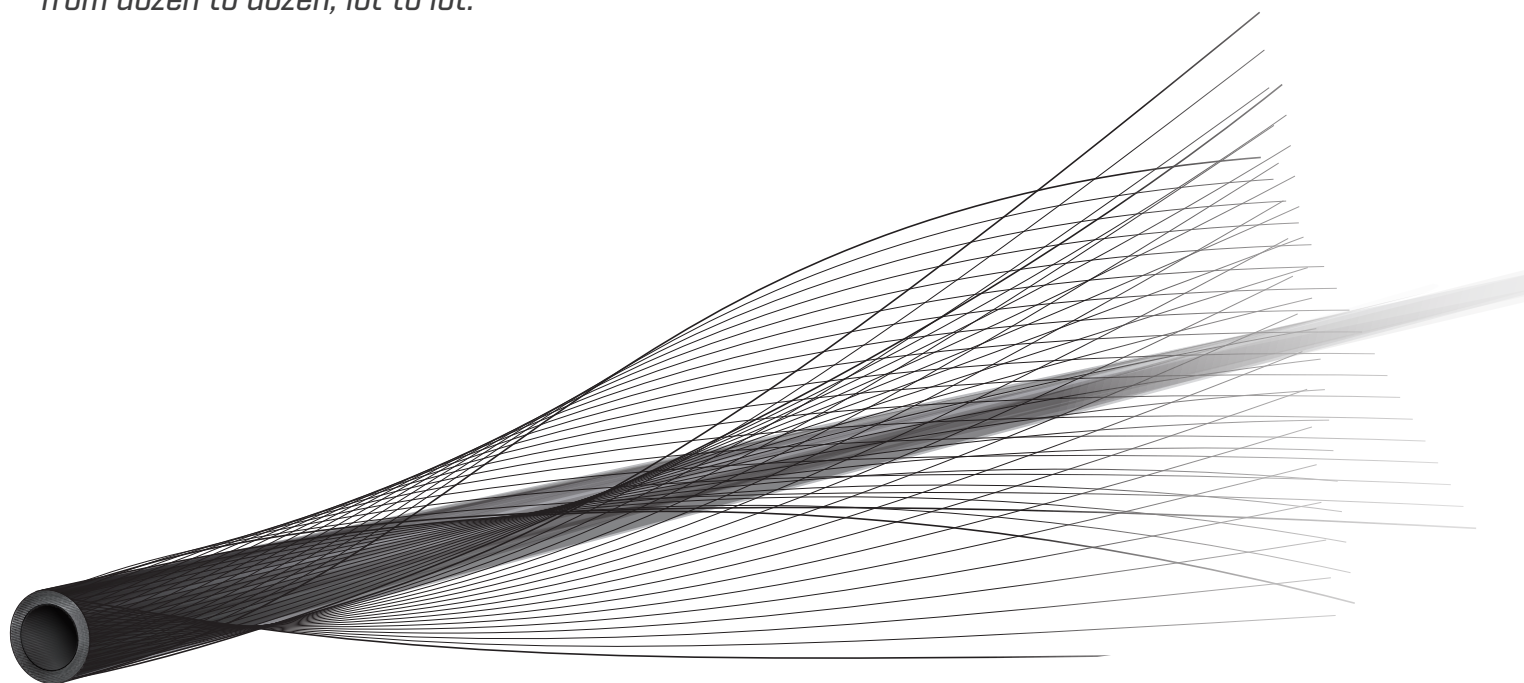
HUNTER CLASSIC Straightness  $\pm .003$ "

BOWHUNTER Straightness  $\pm .006$ "

READY-TO-SHOOT JUNIOR 26" & 28" Size 500



*Easton's exclusive, ACU-CARBON process is a continuous-fed, single-die, single-mandrel manufacturing method. This creates uniform arrows with a more consistent spine and weight from dozen to dozen, lot to lot.*



## INCLUDED



**6.5MM MicroLite™ Nock**  
[8 grains]



**6.5™ Insert**  
[23 grains] *Included with Classic & Match Grade*



**CB™ Insert**  
[21 grains] *Included with Bowhunter and Pre-installed in 6.5 RTS Junior*

## SOLD SEPARATELY



**8-32 Multi Point**  
[100, & 125 grains]



**6.5MM Brass Insert**  
[75, 50 grains]

SIZE	SHAFT WEIGHT	SPINE @ 28" SPAN	STOCK LENGTH	RPS POINT	O.D.
	GPI	Deflection in Inches	Inches	Inches	Inches
500	7.3	0.500	30.5	19/64	0.287
400	8.4	0.400	31	19/64	0.294
340	9.3	0.340	31.75	5/16	0.298
300	9.5	0.300	32.25	5/16	0.300
250	10.0	0.250	32.5	5/16	0.301





6.5 MM

NEW

# 6.5™ WHITEOUT

Whiteout™ is the next evolution of graphics on a hunting arrow. It offers high visibility flight and big game blood traceability. Shoot Whiteout™ and see what you've been hitting.



- 6.5MM uniform USA made ACU-CARBON

Pre-installed 6.5MM Super Nocks™

6.5MM inserts included

Straightness ± .003"



## INCLUDED



### 6.5MM™ Insert

[23 grains] Included with Classic & Match Grade



### 6.5MM MicroLite™ Nock

[8 grains]

## SOLD SEPARATELY



### 8-32 Multi Point

[100, & 125 grains]



### 6.5MM Brass Insert

[75, 50 grains]

SIZE	SHAFT WEIGHT	SPINE @ 28" SPAN	STOCK LENGTH	RPS POINT	O.D.
	GPI	Deflection in Inches	Inches	Inches	Inches
500	7.5	0.500	30.75	5/16	0.291
400	8.1	0.400	31.25	5/16	0.294
340	8.8	0.340	31.75	5/16	0.298
300	9.6	0.300	32.25	5/16	0.301

TRADITIONAL

# CARBON LEGACY™

- Realistic woodgrain traditional finish carbon fiber construction
- Hi-visibility hand-dipped white back end paint
- Pre-installed white 6.5MM 3D Supernocks™
- Straightness:  $\pm .005"$
- 4" shield-cut helical fletch feathers
- .244" inside diameter

## INCLUDED



**6.5MM 3D Super Nock™**  
[13 grains]



**.244 Insert**  
[13 grains]

## SOLD SEPARATELY



**8-32 Multi Point**  
[100, & 125 grains]



**.244 Brass Insert**  
[75, 50 grains]

SIZE	SHAFT WEIGHT	SPINE @ 28" SPAN	STOCK LENGTH	RPS POINT	O.D.
	GPI	Deflection in Inches	Inches	Inches	Inches
700	7.1	0.700	34	19/64	0.289
600	7.5	0.600	34	19/64	0.291
500	8.3	0.500	34	19/64	0.296
400	9.3	0.400	34	19/64	0.301
340	10.1	0.340	34	5/16	0.307



XX75

# CAMO HUNTER™

Pre-installed Super Nocks™ or X Nocks™

RPS inserts included

7075-T9 aluminum alloy

Straightness:  $\pm .002$



## INCLUDED



RPS™ Insert



Super UNI Bushing®



6.5MM 3D Super Nock™  
[13 grains]

## SOLD SEPARATELY



8-32 Multi Point  
[100, & 125 grains]

## INCLUDED (1916 Only)



X UNI Bushing®



5MM X Nock™  
[9 grains]

SIZE	SHAFT WEIGHT	SPINE @ 28" SPAN	MINIMUM STOCK LENGTH	BUSHING WEIGHT	RPS POINT
	GPI	Deflection in Inches	Inches	Grains	Inches
1916	10.0	0.623	31	9	5/16
2016	10.6	0.531	31	4	5/16
2018	12.3	0.500	31	4	19/64
2114	10.4	0.425	32	7	19/64
2117	12.0	0.407	31.5	7	5/16
2213	9.8	0.458	32	9	11/32
2215	10.7	0.419	31.5	9	11/32
2216	12.0	0.376	31.5	9	11/32
2219	13.8	0.337	32	9	11/32
2317	13.3	0.297	32	11	11/32
2413	10.5	0.365	32.5	12	11/32





**XX75**

# GAMEGETTER™

- Pre-installed Super Nocks™

RPS inserts included

7075-T9 aluminum alloy

Straightness:  $\pm .003"$



- INCLUDED**



**RPS™ Insert**



**6.5MM 3D Super Nock™**  
(13 grains)



**Super UNI Bushing®**

- SOLD SEPARATELY**



**8-32 Multi Point**  
(100, & 125 grains)



SIZE	SHAFT WEIGHT	SPINE @ 28" SPAN	MINIMUM STOCK LENGTH	BUSHING WEIGHT	RPS POINT	O.D.
	GPI	Deflection in Inches	Inches	Grains	Inches	Inches
500	10.0	0.623	31	4	5/16	0.289
400	10.6	0.531	31	7	5/16	0.291
340	11.7	0.500	31	11	19/64	0.296

# CROSSBOW

EASTON 9MM™ • XX75 MAGNUM™

## EASTON 9MM

High-strength carbon construction  
20" and 22" lengths  
Factory installed inserts and nocks

## XX75 MAGNUM

Hard-anodized finish  
7075-T9 aluminum alloy  
2219 size  
Easy target pull

## WHITEBOX

High strength carbon  
100% straightness checked  
Weight matched  
20" arrow length  
Fully assembled with 4" vanes, inserts, Halfmoon nocks, and field points  
(Broadheads sold separately)

## EASTON 9MM

LENGTH (inches)	APPROXIMATE WEIGHT (grains)*	GPI	I.D.	O.D.
20	379	8.9	0.300	0.344
22	397	8.9	0.300	0.344

## XX75 MAGNUM

LENGTH (inches)	APPROXIMATE WEIGHT (grains)*	GPI	I.D.	O.D.
20	435	13.8	0.297	0.344
22	462	13.8	0.297	0.344

## WHITE BOX

LENGTH (inches)	GPI	I.D.	O.D.
20	8.9	0.300	0.344

\*Estimated finished arrow weight with 100 grain point allowance.

## • NOCKS



**Flatback Nock**  
[9 Grains]

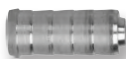


**Halfmoon Nock**  
[11 Grains]

## • POINTS/INSERTS



**8-32 Multi Point**  
[100, & 125 grains]



**Insert (2219)**  
[26 grains]



**9MM Insert**  
[61 Grains]



**9MM Brass Insert**  
[100 Grains]





**CARBON**

# WHITEBOX™

100% sold ready to shoot

29.5 arrow length (ATA Standard)

For bows up to 70 lbs.

420 grain total weight

Weight matched

Vanes, inserts, nocks, and field points included



## INCLUDED



**6.5MM CB™ Insert**  
[21 grains]



**8-32 Multi Point**  
[100, & 125 grains]



**6.5MM 3D Super Nock™**  
[13 grains]



# BEGINNER ARCHERY

## ARCHERY COMBO PACK

- High quality 600D fabric hip quiver
- Holds up to 12 arrows
- Integrated belt clip
- Three XX75® size 1816 high-strength 28" arrows
- Finger tab
- Polymer arm guard
- Fits right or left-handed archers
- Colors: Black and Pink



## SCOUT 2™

- Durable fiberglass construction
- Over Nock – installed
- Sleeve Point – installed
- 26" or 28"



## BEGINNER FINGER TAB

- For right handed archers



## BEGINNER BOW

The Easton beginner bow is the perfect set up to get you started shooting archery. Smooth shooting polymer platform and easy-to-handle draw length-to-draw-weight ratio, the 52" bow is ideal for beginners seeking correct form development and accuracy.

- Ambidextrous for right or left-handed archers
- Integrated sight channel
- Custom Dacron™ string
- Ambidextrous arrow rest and sight pin included
- High-strength glass/polymer limbs and advanced polymer riser
- Ideal beginner draw weight range 10-20 pounds
- Max 26" draw
- Made in USA
- Includes: bow, quiver, three arrows, sight, finger protector, and armguard



Kit colors: Black, Pink, and Realtree® Xtra



# EZ FLETCH™

## Fletching Tools

### (A) SMALL DIAMETER MULTI-KIT

- Includes 2" Mini Helical tool and extra set of straight offset arms
- For all arrow materials and diameters smaller than 20/64"



### (B) SMALL DIAMETER 2" MINI HELICAL TOOL

- Includes 2" Mini Helical tool
- For all arrow materials and diameters smaller than 20/64"



### (C) LARGE DIAMETER MULTI-KIT

- Includes 5" Straight-Offset Jig and extra set of 2" Mini-Helical arms
- For all arrow materials and diameters larger than 20/64"



### (D) LARGE DIAMETER 5" STRAIGHT OFF-SET TOOL

- Includes 5" Straight-Offset Jig
- For all arrow materials and diameters larger than 20/64"



## VANES

All weights are within  $\pm 0.5$  grain

### 2" BULLY™ VANES BY BOHNING

Ultra-stiff design for high speed stability



Size	Length (in)	Height (in)	Weight (grain)	Colors	
200	2.00	.568	6.5	<div>● Fire Orange</div> <div>● Bright Green</div> <div>● Red</div> <div>● Yellow</div> <div>○ White</div>	100 Ct. 36Ct.

### BTV 3" VANES™ BY AAE



Size	Length (in)	Height (in)	Weight (grain)	Colors	
300	3.00	.500	10	<div>● Yellow</div> <div>● Bright Green</div> <div>● Red</div> <div>● Fire Orange</div>	100 Ct. 36Ct.

EZ Fletch is a trademark of Arizona Rim Country, Inc.



# VANES

## DIAMOND HD 3" VANES™ BY BOHNING



Size	Length (in)	Height (in)	Weight (grain)	Colors	Packaging
300	3.00	.500	10	<div> <div>Bright Green</div> <div>Yellow</div> <div>Blue</div> </div> <div> <div>Red</div> <div>White</div> <div>Orange</div> </div>	100-ct.

## DIAMOND VANES™ BY AAE



Size	Length (in)	Height (in)	Weight (grain)	Colors	Packaging
175	1.750	.375	3	<div> <div>Bright Green</div> <div>Sunset Gold</div> <div>Yellow</div> </div> <div> <div>Fire Orange</div> <div>White</div> <div>Black</div> <div>Hot Pink</div> </div>	100-ct.
235	2.375	.375	4		
280	2.875	.500	6		
380	3.875	.500	8		

## TITE FLIGHT™ VANES BY AAE

*Special rib adds stiffness to cut in-flight flutter and noise*



Size	Length (in)	Height (in)	Weight (grains)	Colors	Packaging
200	2.00	.330	4	<div> <div>Hot Pink</div> <div>White</div> <div>Bright Green</div> </div> <div> <div>Black</div> <div>Fire Orange</div> <div>Yellow</div> </div>	100-ct.

## SPIN WING VANES™

*1.75-inch vanes available in right • Packaging - 50-count bag*



Colors ● Black ○ White ● Blue ● Red ● Yellow

*Spin Wing Vane is a trademark of Range-O-Matic Archery Company.*

# TOOLS & SUPPLIES

## QUICKBOND™ INSERT ADHESIVE

- Easy to identify orange color
- Impact resistant
- Ready to shoot in 15-30 minutes
- Sizes: 0.5 FL oz.
- HIT approved



## QUICKBOND™ VANE ADHESIVE

- Ultimate strength
- Bonds in seconds
- Primer Pen compatible
- Sizes: 0.5 FL oz.



## CONVENTIONAL BOWSTRING WAX

- Protects bowstring from wind and weather
- Specially formulated for modern bowstring materials



## QUICKBOND™ VANE PRIMER PEN

- Compatible with all vane adhesives
- Improves bond strength & reduces drying time
- Improves adhesion for hard-to-stick vanes



## FASTSET™ VANE GEL

- Sizes: 3 gram



## FLETCH-TITE® PLATINUM

- Size: 22-gram tube



## CROSSBOW RAIL LUBE

- Full synthetic formula provides maximum lubrication for crossbow rails
- Protects string from damage



## HOT MELT ADHESIVE

- Low temperature
- 3" x 1/2" stick
- Available in 10" shop stick



## 3-STEP BOWSTRING MAINTENANCE KIT

- String Cleaner —removes dirt, wax and contaminants from bowstring
- Bowstring Revitalizer—restores color and penetrates to the core of the string for reduced friction and maximum shot life
- Full Synthetic Bowstring Wax—protects longer & better than conventional waxes



## FULL-SYNTHETIC ARROW LUBE

- Full-synthetic formula for easy arrow extraction
- Scent free, easy to apply
- Suitable for all types of arrows
- Most advanced arrow lube ever created
- Quiver-mount neoprene sleeve included



## WEDGE ARROW PULLER

- Proprietary compound for maximum arrow grip
- Internal-molded sides for improved wet-weather pulling
- Ergonomic wedge shape for comfortable fit



## PUCK ARROW PULLER

- Proprietary high-grip compound for maximum arrow grip
- Flat puck design for maximum grip leverage
- Best for tight single spot groups



## UNIVERSAL NOCK TOOL

- Handy design allows for installation and removal of all nock sizes
- Includes a threaded shank for easy removal of broken nocks



## BROADHEAD WRENCH

- For safe installation and removal of broadheads from arrows



## BCY NOCK & PEEP SERVING

- .020" nylon thread perfect for tying nock sets and peep-sights
- Includes 1m red thread and 1m black thread



## BCY #24 D-LOOP ROPE

- The professionals' choice and #1 choice of archers worldwide
- Stiff-braided POLY fibers
- Good, consistent burn
- Available in 1m lengths and 50ft spools



Fletch-Tite® is a registered trademark of Bohning Company LTD

# TOOLS & SUPPLIES

## ELITE NOCK AND D-LOOP PLIERS

- Maximizes mechanical advantage for tightest possible D-loops
- Patented dual-jaw design
- Convenient and versatile archery tool
- Six tools in one



## PRO ARCHERY NEEDLE-NOSE PLIERS

- A must have for any serious bow mechanic
- Rubber-coated handle
- Needle-nose plier design with archery specific features for D-loop stretching and hot-melt point installation



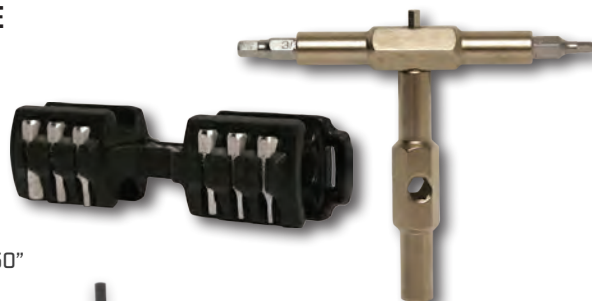
## BCY™ POLYGRIP CENTER SERVING THREAD

- .020" polyester thread perfect for center serving
- 75-yard spool



## ARCHERY OMNI TOOL BY FIX-IT STICKS® - 17 PIECE

- Integrates 17 of the most popular Standard & Metric Hex, and Star bit sizes into the most compact archery tool ever produced
- Snaps together in a T-shape for leverage
- Compatible with any standard 1/4" drive bit
- Breaks down for portability but durable enough for shop use
- Perfect for servicing all types of compound and recurve bows, cam modules, and accessories
- Includes the following bit sizes:  
Standard Sizes: 1/4, 7/32, 3/16, 5/32, 9/64, 1/8, 7/64, 3/32, 5/64, 1/16, .050"  
Metric Sizes: 1.5, 2.5, 3.0  
Star Tip Sizes: T10, T15, T20



## PRO HEX FOLD UP SET - STANDARD

- Standard Sizes: 3/16, 5/32, 9/64, 1/8, 7/64, 3/32, 5/64, 1/16, .050



## PRO HEX FOLD UP SET - XL

- XL Sizes: 1/4, 7/32, 3/16, 5/32, 9/64, 1/8, 7/64, 3/32, 5/64



## PRO HEX FOLD UP SET - METRIC/STANDARD COMBO

- Sizes: 1/16, 5/64, 3/32, 7/64, 1/8, 9/64, 5/32, 3/16
- Metric: 1.5, 2.5, 3.0, and a 1/8" flat blade screwdriver



## PRO HEX STUBBY 10 PIECE "L" WRENCH SET - XL

- Short arm design for reaching into tight fitting screws
- Perfect for working around sights & rests
- XL Sizes: 1/16, 5/64, 3/32, 7/64, 1/8, 9/64, 5/32, 3/16, 7/32, 1/4



## PRO HEX LIMB MASTER ALLEN WRENCHES

- Long arm hex wrench installed in comfortable molded rubber handle
- Perfect for adjusting limb bolts
- Sold individually in sizes 7/32 and 1/4



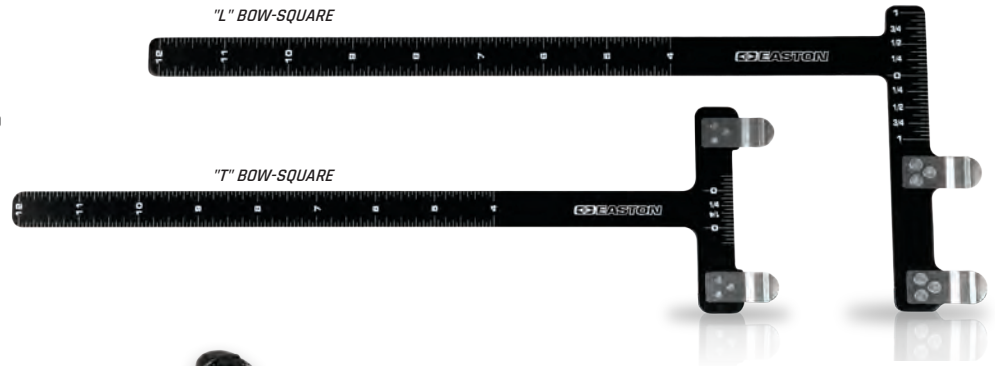
ASB Majesty is a trademark of Angel Co., Ltd. Fix-it Sticks Registered Trademark of Titan Product Development LLC.



# TOOLS & SUPPLIES

## BOW-SQUARES

- Lightweight, strong aluminum
- Precision laser-etched rule
- Critical for precise bow tuning & set up



## RECURVE BOW STRINGER

- Molded rubber-cupped stringer recommended for stringing target recurve bows
- Makes stringing safe and easy



## 9-PIECE ARROW PREP TOOL KIT

- Innovative kit cleans and abrades the interior shaft surface for proper point adhesion and maximum bond strength
- 9-piece kit fits all sizes of arrow shafts from 4MM to 27/64" diameters



## ARCHERY ESSENTIALS™ TOOL KITS

- Kit items save 30% versus items sold separately
- Both kits include a zippered Case Cube that comes with peel-off hook and loop panel to attach to bow cases with fleece-lined interiors

### 12 AND 8 PIECE KITS INCLUDES:

- Extra large folding allen wrench set
- Nock installation & removal tool
- Wedge arrow puller
- Zippered Case Cube
- Bowstring wax
- Serving thread
- D-Loop rope
- Broadhead wrench

### 12-PIECE KIT ADDS:

- D-Loop pliers
- Bow-square-L model
- Small folding allen wrench set
- Arrow prep tool kit

12-PIECE PRO SHOP



### PIECE CROSSBOW KIT INCLUDES:

- Small folding allen wrench set
- Zippered Cube Case
- Rail lube wax
- Wedge arrow puller
- Broadhead wrench
- Scope lens cleaner cloth



6-PIECE CROSSBOW KIT



8-PIECE VALUE PACK

# SHOOTING ACCESSORIES



## STAY SHARP™ BROADHEAD CASE

- Grippers ensure broadhead sharpness by supporting ferrules without contacting blades
- Hold six mechanical or fixed-blade broadheads
- Durable ABS body with snap-fit locking polycarbonate end caps
- Compatible with most Deep-Six and standard 8-32 broadheads
- Dimensions: approximately 5"W x 4"H x 2"D

## DELUXE ARM GUARD

- Progressive designs molded from durable poly-carbonate material
- Durable elastic straps ensure a snug fit
- Available in oval and "dog" bone shapes
- Colors: blue, red, yellow, and smoke



## CHEST PROTECTOR

- Unique comfort-fit design
- Breathable air-mesh construction
- Easy-adjust shoulder
- Sizes: Right and left-handed models: XS, S, M, L, XL, and XXL
- Color: black/white



## COMFORT FLEX ARM GUARD

- Elastic arm band with adjustable cord locks
- Flexible molded composite material
- One size fits all
- Colors: black



## STIFF WRIST SLING

- Clean design
- Vibration reducing molded mount
- Stiff sling material holds its shape for quick access
- Colors: black, camo, green, pink, blue, red, and orange



## DELUXE PARACORD DIAMOND WRIST SLING

- Comfortable leather mount
- Deluxe wide cobra braid
- Easy to adjust
- Colors: black, camo, green, pink, blue, red, and orange



## NEOPRENE WRIST SLING

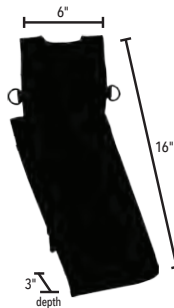
- Durable, lightweight neoprene construction
- Easy-adjust strap



# COMPETITION QUIVERS

## ELITE™ FIELD QUIVER WITH BELT

- European-inspired luxurious design
- Technical synthetic leather construction
- Infinitely adjustable and sturdy, Elite quiver belt uses secure T-style buckle
- Semi-rigid rear-facing compression-molded arrow body eliminates need for separate arrow tubes
- Fleece-lined interior and removable arrow dividers for quiet, customized arrow management
- Integrated bow-square slot and dual accessory attachment rings
- Matching quiver belt included-release pouch sold separately
- Colors: stars & stripes red, blue, carbon black, and white
- Left-hand models only available in carbon black and white



Quiver belt included



NEW

## ELITE™ QUIVER BELT

- One size fits most
- T-style buckle
- Included with Elite quivers—also sold separately
- Colors: red, blue, grey, carbon black, and white



Accessory Clip (included)

## ELITE™ RELEASE POUCH



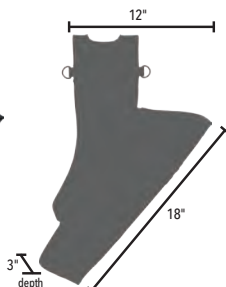
Release Pouch (sold separately)

Removable Pocket (included)



## ELITE™ TAKEDOWN HIP QUIVER WITH BELT

- Technical sport-fabric construction
- Infinitely adjustable, yet sturdy, Elite quiver belt with T-style buckle for secure operation-included
- Allows quiver body tube to separate from belt loop for easy storage
- Semi-rigid front-facing compression-molded arrow body eliminates need for separate arrow tubes
- Fleece-lined interior and removable arrow dividers for quiet and customized arrow management
- Directional locking snap removable oversized upper magnetic-closure pocket or accessory clip
- Integrated bow-square slot and dual accessory attachment rings
- Matching quiver belt included- release pouch sold separately
- Colors: red, blue, carbon black, and white
- Left-hand models only available in carbon black and white



Quiver belt included



\*Modular system can accommodate multiple configurations



# COMPETITION QUIVERS

## DELUXE FIELD QUIVER WITH BELT

- High-denier woven fabric construction
- Semi-rigid rear-facing compression-molded arrow body eliminates the need for separate arrow tubes
- Fleece-lined interior and removable arrow dividers for quiet and customized arrow management
- Adjustable, sturdy Deluxe Quiver belt with T-style buckle included
- Integrated bow-square slot and dual accessory attachment rings
- Release pouch sold separately
- Colors: silver, red, blue, and black
- Left-hand models only available in black and silver



## DELUXE QUIVER BELT

- One size fits most
- Innovative hook-and-loop adjustment
- Easy on/off T-buckle connection



## DELUXE RELEASE POUCH



## DELUXE TAKEDOWN HIP QUIVER WITH BELT

- Allows quiver body tube to separate from belt loop for easy storage
- High-denier woven fabric construction
- Semi-rigid front-facing compression-molded arrow body eliminates the need for separate arrow tubes
- Adjustable Deluxe Quiver Belt with T-style buckle included
- Fleece-lined interior and removable arrow dividers for quiet and customized arrow management
- Upper magnetic-closure pocket
- Integrated bow-square slot and dual accessory-attachment rings
- Colors: silver, red, blue, and black
- Left-hand models only available in black and silver





# RECREATIONAL QUIVERS

## FLIPSIDE™ 4-TUBE HIP QUIVER WITH BELT

- Innovative design fits both right and left-hand shooters
- Includes one-size-fits-most adjustable quiver belt
- Rugged high-denier POLY construction
- Reversible hook-and-loop pocket for right/left side wear
- Durable injection-molded arrow separator tubes
- Integrated T-square and pen/pencil slots
- Multiple accessory attachment rings
- Colors: black, red, blue, and Realtree Edge®



## FLIPSIDE™ 3-TUBE HIP QUIVER

- Innovative design fits both right and left-hand shooters
- Reversible hook-and-loop pocket for right/left side wear
- Rugged high-denier POLY construction
- Stainless steel belt clip attachment
- Integrated accessory attachment grommet
- Durable injection-molded arrow separator tubes
- Integrated T-square slot
- Colors: black, red, blue, and Realtree Edge®



## FLIPSIDE™ 2-TUBE HIP QUIVER

- Innovative design fits both right and left-hand shooters
- Rugged high-denier POLY construction
- Stainless steel belt clip attachment
- Durable injection-molded arrow separator tubes
- Colors: black, red, blue, and Realtree Edge®



REPLACEMENT FLIPSIDE™ ARROW TUBE



REPLACEMENT BELT CLIP



Realtree Edge is a trademark of Jordan Outdoor Enterprises, Ltd.

# BOW CASES

## NEW BOWTRUK™ 4716 & 4015 TRAVEL BOWCASE

- Accommodates two bows up to 47"
- Cordura 1680D Type 6,6 ballistic nylon shell
- Six interior & exterior accessory pockets for bow-sights, gear, and arrows
- Case-cube compatible fleece main compartment
- Dense 360° exterior padding
- Double seatbelt-style bow retainment straps
- Padded carry handle
- Compatible with Easton arrow totes & boxes
- Hybrid hard/soft shell perimeter protection
- Dark grey (Model 4716)
- Tan (Model 4015)
- 47" L X 16" W X 9" H (Model 4716)
- 40" L X 15" W X 9" H (Model 4015)



## DELUXE 3615 COMPOUND/RECURVE ROLLER BOW CASE

- Advanced wheeled compact travel case for compound/recurve bows
- Triple field-replaceable roller bearing wheels
- Double seatbelt system to securely anchor bows
- Three internal accessory pockets
- Dimensions [36"Lx15"Wx9"H]
- Compatible with the Easton Deluxe 33" & 36" arrow cases
- Case-cube compatible interior fleece hook-and-loop lining with seatbelt strap bow retention system
- Hybrid hard/soft shell 360° perimeter for maximum contents protection
- Airline travel cover recommended [sold separately]
- Color: black/orange



## ROLLER BOWCASE TRAVEL COVERS

- Fits Deluxe 3615 Roller Recurve bow cases
- Custom tailored for specific roller bowcase models
- A must for airline-travel bowcase protection
- Compression-molded semi-rigid bottom
- Premium #10 zippers for maximum strength
- Double wide buckled straps for extra security
- ID card slot
- Water resistant



## ELITE 2.0 4717 DOUBLE BOW CASE

- Accommodates two full-size target bows up to 47" in overall length
- Case-cube compatible double-fleece main compartment
- Double or single bow with opposite side clothing storage
- 360° exterior padding
- Dimensions 47"x17"
- Movable hook-and-loop bow anchor system
- Eight interior and exterior accessory pockets with dedicated separate compartments for quivers, stabilizers, and arrow storage
- Compatible with Easton arrow totes & Deluxe 33" & 36" arrow boxes
- Padded shoulder strap and comfortable carry handle
- Available in black/grey color



# BOW CASES

## WORLD CUP™ 4517

- Accommodates one bow up to 45" in overall length
- Overall dimensions 45" long x 17" high
- 9 interior and exterior accessory pockets with dedicated compartments for stabilizers and arrow storage
- Case-cube compatible fleece main compartment
- Compatible with Easton arrow totes and Deluxe 33" and 36" arrow boxes
- Colors coordinate with Easton Deluxe Hip/Field quivers
- Dense 360 degree exterior/corner cam padding
- Re-positionable hook-and-loop bow anchor system
- Padded carry handle
- Shoulder strap included
- Colors: red, black, and blue



## WORKHORSE™ 4118

- Accommodates one bow up to 41" in overall length
- Overall dimensions 41" long x 18" high
- Extra-wide 5" side depth to accommodate bow-mounted quivers; maximum inside storage
- Eight interior and exterior accessory pockets with dedicated arrow box compartments
- Case-cube compatible fleece main compartment
- Compatible with Easton arrow totes and Deluxe 33" and 36" arrow boxes
- Re-positionable hook-and-loop bow anchor system
- Dense 360° exterior padding
- Shoulder strap included
- Colors: Charcoal, Realtree® Edge,



*Realtree Edge is a trademark of Jordan Outdoor Enterprises, Ltd.*

## BOW-GO™ 4118

- Accommodates one bow up to 41" in overall length
- Overall dimensions 41" long x 18" high
- Extra-wide 5" side depth to accommodate bow mounted quivers and maximum inside storage
- Four interior and exterior pockets with a dedicated arrow box compartment
- Compatible with Easton arrow totes and Deluxe 33" and 36" arrow boxes
- Colors: Black, Realtree® Edge, olive/grey



*Realtree Edge is a trademark of Jordan Outdoor Enterprises, Ltd.*



# BOW CASES

## DELUXE 4517 BOW CASE

- Seven generously sized interior and exterior pockets for complete storage of bows, arrows, accessories, and range gear
- Compatible with all Easton arrow tote and arrow case models
- Premium oversized #10 zippers with easy-grab pulls
- Cavernous 3.5" case-cube compatible fleece-lined padded interior (case cubes sold separately)
- Fits most bows —interior dimensions 44" x 16"
- Movable bow-anchoring straps for rock-solid bow security
- 360° padding for complete bow protection
- Colors: Realtree® Max-1/lavender



Realtree Max1 is a trademark of Jordan Outdoor Enterprises, Ltd.



- Accommodates one bow up to 36" in overall length
- Overall dimensions 36" long x 18" high
- Dedicated outer snap-lock mesh accessory pocket
- Premium zippers with easy-grab molded pulls
- Multi-colored front printing design
- Colors, black/grey, grey/red, Realtree® Edge



Realtree Edge is a trademark of Jordan Outdoor Enterprises, Ltd.



## GENESIS™ 4014

- Custom tailored for the Genesis compound bow
- Rugged high-denier POLY construction with thick interior padding
- Premium zippers with easy-grab pulls
- Integrated Easton arrow-tote attachment straps
- Exterior mesh accessory pocket
- Colors: Red, Blue, and Black
- 40" L x 14" H



## BOWSLICKER™

- Easy, secure carry with patented limb loop design
- Quick and quiet removal
- Keep cams and strings protected from brush
- Fits all compound bows, including parallel limbs, up to 36" axle-to-axle
- Color: Olive Green



Officially Licensed Product  
Protected by US Patents:  
9,038,878 & 9,310,158





# BOW CASE ACCESSORIES

## CASE CUBES™ BOW CASE

### ACCESSORY POCKETS

- Most efficient bow case accessory storage system ever created
- Durable 2.5" deep fabric construction with padded surrounds and clear mesh zippered closure
- Maximize your space by organizing gear in and around your bow inside your case
- Hook-and-loop attachment for customized fit and easy in-and-out accessory storage



QUARTER CUBE  
7.5" X 7.5"



HALF CUBE  
7.5" X 15"



CORNER CUBE  
7.5" X 10"

### BOW SLEEVE

- Durable 600D fleece-lined sleeve to protect bow from other gear
- Adjustable for up to 47" bows
- Fits inside all Easton bowcases



### STABILIZER SYSTEM SLEEVE

- Durable 600D fleece-lined sleeve and pocket bag to store entire stabilizer system: main rods, side rods, V-bars, weights
- Length adjustable, protects other equipment in the same bow case
- Fits inside all bowcases



### DELUXE MOLDED ARROW CASES

- Includes foam arrow dividers
- Holds arrows securely (with or without points)
- Four sizes:  
Deluxe 36" [24-arrow] - outside dimensions [36" x 6.5" x 3"]  
Deluxe 33" [18-arrow] - outside dimensions [33" x 5" x 3"]  
Deluxe Crossbow [12-arrow] - outside dimensions [24" x 6.5" x 3"]  
Round Arrow Tote [12-arrow] - adjustable length



# CROSSBOW

### CROSSBOW SLICKER™

- Fits crossbows from 15" to 30" axle-to-axle
- Rugged, weatherproof fabric
- Ultra-light—weighs less than 8 oz
- Color: Olive Green



Officially Licensed Product  
Protected by US Patents:  
9,038,878 & 9,310,158

# PACKS

## CLUB XT™ RECURVE BACKPACK

- Affordable recurve backpack with great features
- High-denier fabric construction and fully adjustable shoulder harness
- Fits up to 25" recurve handles and long limbs
- Arrow tote included
- Colors: grey, blue, red, and black



## DELUXE RECURVE BACKPACK

- Convertible design for either backpack or shoulder carry (shoulder strap included)
- Internal storage compartments for sight, stabilizers, arrows, limbs, tools and other accessories
- External side mesh pockets for tripod or water bottle storage
- Front-side zipper pocket for clothing or other items
- Front-side privacy mesh ID slot for business cards
- High-denier woven fabric construction
- Fits up to 27" recurve handles and long limbs
- Arrow tote included
- Compatible with universal rain cover (sold separately)



## UNIVERSAL RAIN COVER

- Compatible with Deluxe & Club XT recurve backpacks

# POINTS, INSERTS

## POINTS



### 6.5MM CB™ Point 6.5MM

Fits S (6.5MM) diameter arrows  
Point Weight – 80 & 100 Grains

## THREADED POINTS



### Multi Point™

11/32" – 100, 125 grains  
5/16" – 100, 125 grains  
9/32" – 100, 125 grains  
17/64" – 100, 125 grains  
19/64" – 100, 125 grains



### Deep Six™ Field Points

Fits G (4MM) & X (5MM) arrows with  
Deep Six thread inserts  
100 Grains

## INSERTS



### .244 Insert

(13 grains)



### .244 Brass Insert

(75, 50 grains)



### Deep Six™ Steel G (4MM) HIT Insert

Fits G (4MM) diameter  
carbon, A/C & FMJ arrows  
Uses Deep Six thread points  
20 Grains



### RPS™ Insert



### Brass X (5MM) HIT® INSERT

75 – 50 Grains



### 5MM X HIT® Insert

16 grains  
Dozen Pack and 100 count Bulk



### 6MM ST RPS Insert

18 grains



### 6MM Brass Insert

75 – 50 grains



### 6.5MM CB™ Insert

21 grains



### 6.5MM™ Insert

23 grains



### T64™ RPS Insert

18 grains

## INSERTS



### 4MM Titanium Half-Out

55 grains



### 4MM Aluminum Half-Out

(50 grains)



### 4MM Steel Half-Out

(95 grains)

Uses 8-32 thread 5/16" field points



### 5MM Aluminum 8-32 Half-out

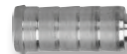
25 grains



### 5MM Steel 8-32 Half-out

75 grains

## BOLT INSERTS



### Aluminum (2219)

40 Grains



### 9MM Crossbow Insert

61 Grains



### 9MM Brass Insert

[100 Grains]

For component fitment, see arrow model pages for shaft diameter specification.

# NOCKS

## TARGET NOCKS



### 4MM G Nock™

Colors: blue, white, green, orange, deep red  
Throat: Small=0.096, Large= 0.112  
Dozen Pack and 100-count Bulk  
6 grains



### N Nock™

Fits Genesis  
Throat: 0.05  
Colors: red, white, green, orange, grey, yellow  
Dozen Pack and 100-count Bulk  
17 grains



### 6.5MM 3D Super Nock™

Colors: black, green, orange, white, crystal, lemon-lime, purple, red, and smoke, pink, blue  
Throat: 0.103  
Dozen Pack and 100-count Bulk  
13 grains

## CROSSBOW NOCKS



### Halfmoon & Flatback Nocks

Colors: red, orange, green, white, (model specific)  
Dozen Pack and 100-count Bulk  
Flatback (9 grains) Half Moon  
11 grains

## HUNTING NOCKS

### Colors

● Bright Green, ● Orange, ● Red, ● Smoke ○ White, ● Yellow



### 4MM Microlite™ Nock

Throat: 0.112  
Dozen Pack and 100-count Bulk  
6 grains



### 5MM X Nock™

Throat: 0.111  
Dozen Pack and 100-count Bulk  
9 grains



### 6MM H Nock™

Throat: 0.111  
Dozen Pack and 100-count Bulk  
9 grains



### 6.5MM MicroLite™ Super Nock™

Throat: 0.108  
Dozen Pack and 100-count Bulk  
8 grains



# SHAFT MODELS

FMJ & A/C	Materials/Construction	Inserts	Points	Nock System	Nock Type	Weight Tolerance <sup>3</sup>	Straightness <sup>1</sup>	Color/Finish	Sizes
<b>4-6MM T64 FMJ™</b>	Precision 7075 alloy jacket bonded to a carbon core	T64 RPS	8-32	Internal-fit	4MM Microlite™	±2 grains	± 0.001	Two tone Green/Silver	DF 7.9 (320), DF 9.5 (380)
<b>4MM AC PROCOMP™ HUNTER</b>	High-strength carbon fiber bonded to a 7075 core	4MM Aluminum Half-out	8-32	Internal-fit	4MM Microlite™	±0.5 grains	±.0015"	Polished black carbon	400, 340, 300, 250
<b>4MM FMJ™ MATCH GRADE</b>	Precision 7075 alloy jacket bonded to a carbon core	4MM Aluminum Half-out	8-32	Internal-fit	4MM Microlite™	±2 grains	±.001"	Diamond Pattern	400, 340, 300, 250
<b>4MM FMJ™</b>	Precision 7075 alloy jacket bonded to a carbon core	4MM Aluminum Half-out	8-32	Internal-fit	4MM Microlite™	±2 grains	±.002"	Diamond Pattern	400, 340, 300, 250
<b>5MM FMJ™ MATCH GRADE</b>	Precision 7075 alloy jacket bonded to a carbon core	5MM HIT® Insert	8-32	internal-fit	5MM X™	±2 grains	±.001"	Diamond Pattern	500, 400, 340, 300, 250
<b>5MM FMJ™ AUTUMN ORANGE</b>	Precision 7075 alloy jacket bonded to a carbon core	5MM HIT® Insert	8-32	Internal-fit	5MM X™	±2 grains	±.002"	Autumn Orange	500, 400, 340, 300, 250
<b>5MM FMJ™</b>	Precision 7075 alloy jacket bonded to a carbon core	5MM HIT® Insert	8-32	Internal-fit	5MM X™	±2 grains	±.002"	Diamond Pattern	500, 400, 340, 300, 250
<b>6MM FMJ™</b>	Precision 7075 alloy jacket bonded to a carbon core	6MM ST RPS Insert	8-32	Internal-fit	6MM H™	±2 grains	±.003"	Two-Tone Gunmetal/Silver	470, 390, 320
ALL CARBON	Materials/Construction	Inserts	Points	Nock System	Nock Type	Weight Tolerance <sup>3</sup>	Straightness <sup>2</sup>	Color/Finish	Sizes
<b>4MM AXIS LONG RANGE™</b>	Acu-Carbon	4MM Half-out	8-32	Internal-fit	4MM Microlite™	±0.5 grain	±.003"	Black, Micro-smooth	400, 340, 300, 250
<b>4MM AXIS LONG RANGE™ MATCH GRADE</b>	Acu-Carbon	4MM Half-out	8-32	Internal-fit	4MM Microlite™	±0.5 grain	±.001"	Black, Micro-smooth	400, 340, 300, 250
<b>5MM AXIS™</b>	Acu-Carbon	5MM HIT® Insert	8-32	Internal-fit	5MM X™	±2 grains	±.003"	Black, Micro-smooth	700, 600, 500, 400, 340, 300, 260, 200
<b>5MM AXIS SPT™</b>	Acu-Carbon	5MM Half-out	8-32	Internal-fit	5MM X™	±2 grains	±.006"	Black, Micro-smooth	700, 600, 500, 400, 340, 300, 260, 200
<b>5MM AXIS MATCH GRADE™</b>	Acu-Carbon	5MM HIT® Insert	8-32	Internal-fit	5MM X™	±2 grains	±.001"	Black, Micro-smooth	400, 340, 300, 260, 200
<b>5MM AXIS™ TRADITIONAL</b>	Acu-Carbon	5MM HIT® Insert	8-32	Internal-fit	5MM X™	±2 grains	±.003"	Woodgrain Graphic	700, 600, 500, 400, 340
<b>CARBON LEGACY™</b>	High-strength carbon fibers	.244 Insert	8-32	Internal-fit	6.5MM 3D	±2 grains	±.005"	Woodgrain Graphic	700, 600, 500, 400, 340
<b>6MM SONIC 6.0™</b>	Acu-Carbon	6MM ST Insert	8-32	Internal-fit	6MM H™	±2 grains	±.003"	Black, Micro-smooth	600, 500, 400, 340, 300, 250
<b>EASTON 6.5MM MATCH GRADE™</b>	Acu-Carbon	6.5MM Insert	8-32	Internal-fit	6.5MM	±2 grains	±.001"	Black, Micro-smooth	500, 400, 340, 300, 250
<b>EASTON 6.5MM HUNTER CLASSIC™</b>	Acu-Carbon	6.5MM Insert	8-32	Internal-fit	6.5MM	±2 grains	±.003"	Black, Micro-smooth	500, 400, 340, 300, 250
<b>EASTON 6.5MM BOWHUNTER™</b>	Acu-Carbon	CB Insert	8-32	Internal-fit	6.5MM	±2 grains	±.006"	Black, Micro-smooth	500, 400, 340, 300, 250
<b>6.5MM WHITEOUT™</b>	Acu-Carbon	6.5MM Insert	8-32	Internal-fit	6.5MM	±2 grains	±.003"	White	500, 400, 340, 300
<b>6.5MM WHITEBOX™</b>	Acu-Carbon	6.5 CB Insert	8-32	Internal-fit	6.5MM	NA	NA	Black, Micro-smooth	One Size
ALUMINUM	Alloy	Inserts	Points	Nock System	Nock Type	Weight Tolerance <sup>3</sup>	Straightness <sup>1</sup>	Color/Finish	Sizes
<b>CAMO HUNTER™</b>	7075-T9	RPS Insert	8-32	UNI System	3D Super,	±1%	±.002"	4-Tone Black, Brown, Dark Green, & Light Green Dye Camo	1816, 1916, 2016, 2018, 2114, 2117, 2213, 2215, 2216, 2219, 2317, 2413
<b>GAMEGETTER™</b>	7075-T9	RPS Insert	8-32	UNI System	3D Super	±1¼%	±.003"	Black, Hard-anodized	500, 400, 340

1 Guaranteed straight to more stringent standards than ATA/ ASTM methods.  
2 Guaranteed to meet or exceed similar carbon-industry straightness specifications.

3 Grains-per-shafts in a dozen bundle.  
®/™ Registered trademark/trademark of Easton.

## LIMITED WARRANTY

The Easton arrow shaft limited warranty covers any defects in material and/or workmanship for one year from the original owner's date of purchase. Arrow shafts that are defective will be replaced by your local Easton dealer with proof of purchase. Damage caused by impact from other arrows, impact with hard objects, improper cleaning or fletching, or from normal wear and tear is not covered by Easton's limited warranty. The limited warranty also does not cover damage resulting from your failure to follow Easton's written instructions. For written instructions and warranty details see [www.eastonhunting.com](http://www.eastonhunting.com).

Some of the products on these pages are covered by one or more of these patents: 7,004,859 - 7,077,770 - 7,115,055 - 7,115,055

CROSSBOW

MODEL	Materials/Construction	Inserts	Points	Nock System	Nock Type	Weight Tolerance <sup>3</sup>	Straightness	Color/Finish	Sizes
WHITE BOX	Acu-Carbon	9MM Bolt Insert	RPS Point	Internal-fit	Halfmoon, Flatback	±.2 grains	±.003" <sup>2</sup>	Black, Micro-smooth	20
EASTON 9MM™	Acu-Carbon	9MM Bolt Insert	RPS Point	Internal-fit	Halfmoon, Flatback	±.2 grains	±.003" <sup>2</sup>	Black, Micro-smooth	20, 22
MAGNUM XX75™	7075 -T9	RPS Insert	RPS Point	Internal-fit	Halfmoon, Flatback	±.2 grains	±.003" <sup>1</sup>	Gray Anodize	20, 22

1 Guaranteed straight to more stringent standards than ATA/ ASTM methods.

2 Guaranteed to meet or exceed similar carbon-industry straightness specifications.

3 Grains-per-shafts in a dozen bundle.

®/™ Registered trademark/trademark of Easton.

ALLOY SHAFT AND COMPONENT SPECIFICATIONS

Size	Shaft Weight		Spine @ 28" Span	Minimum <sup>1</sup> Stock Length		UNI System			Adjustable Points	NIBB Point	One-piece Bullet Point	RPS Insert Alum.	RPS Point Size
	XX75	X7		XX75	X7	UNI Bushing	X Nock Bushing	Super UNI Bushing					
	Grains per Inch					Inches		Grains					
1214	5.9	—	2.501	25.5	—	—		—	—	—	45	—	—
1416	7.2	—	1.684	26.25	—	2		—		46	52	—	—
1514	—	6.8	1.379	—	25	5		—	—	61 <sup>9</sup>	—	—	—
1516	7.3	—	1.403	26.75	—	3		—		48	54	—	—
1614	—	7.7	1.153	—	26.75	5		—	—	51	—	—	—
1616	8.4	—	1.079	27.5		5				56	63		
1713	7.4	—	1.044	29	—	7		—	—	54	—	—	—
1714	—	8.1	0.963	—	27.75	7		—	—	56	—	—	—
1716	9.0	—	0.880	29	—	7		—		60	68	10	17/64
1814	—	8.6	0.799	—	29.5	8		—	—	60	—	—	—
1816	9.3	—	0.756	29	—	8	4	—		63	74	12	9/32
1820	12.2	—	0.592	29	—	—		—		—	59	—	—
1913	8.3	—	0.733	31	—	9		—		64	—	18	5/16
1914	—	9.3	0.658	—	29.5	9		—	—	64	—	—	—
1916	10.0	—	0.623	30	—	9	7	—		72	82	16	5/16
2013	9.0	—	0.610	32	—	—		5	—	68	—	21	5/16
2014	—	9.6	0.579	—	31½	—		5	100	71	—	—	—
2016 (500)	10.6	—	0.531	31	—	—		4	—	—	90	20	5/16
2018	12.3	—	0.64	30.5				4			90	19	5/16
2114	9.9	9.9	0.510	30	31	—		7	—	78	100	25	5/16
2117 (400)	12.0	—	0.407	31.5	—	—	—	7			100	25	5/16
2213	9.8	9.9	0.458	30.5	32	—		9	—	88	100	30	11/32
2214	—	10.4	0.425	—	31.9	—		9	100	103	100	—	—
2215	10.7	9.5	0.419	31.5	—	—		9	—	—	100	30	11/32
2216	12.0	—	0.376	32	—	—		9	100	—	100	29	11/32
2219	13.8		0.337	32	—	—		9			100	29	11/32
2312	—	9.5	0.423	—	31.75	—		11	—	99	100	37	11/32
2314	10.7	10.8	0.391	32	32.25	—		10	100	—	100	34	11/32
2315 (340)	11.7	11.7	0.342	32	32.6	—		11	100	—	100	37	11/32
2317	13.3	—	0.297	32	32.75	—		11	100	—	100	37	11/32
2318	—	13.7	0.300	—	32.75	—		11	—	—	200	—	—
2413	10.4	10.5	0.365	—	34	—		12	—	110	100	40	11/32
2512	—	10.3	0.321	—	33	—		15	—	108	100	52	11/32
2613	—	11.5	0.265	—	33	—		17	—	—	150	58	3/8
2712	—	11.3	0.260	—	33	—		19	200	—	150/300	—	—

— Indicates not available

1 Length is approximate stock shaft length for each size.

2 NIBB point grain weights are ±0.5 grain. All other components are ±1 grain



**WARNING FOLLOW THESE INSTRUCTIONS TO AVOID PERSONAL INJURY. SEE WARNINGS AND USE AT [WWW.BSAFE.WS](http://WWW.BSAFE.WS) OR 877-INFO-ETP (877-463-6387).**

## CHECK EVERY ARROW, EVERY SHOT

### ARROW DAMAGE

Any arrow can be damaged, even when new. A damaged arrow could break upon release and injure you or a bystander. If you have any reason to believe that an arrow has been damaged, DISCARD THE ARROW. Damage to an arrow shaft, or any of its components, may occur from improper transport, handling, or use; impacts with hard objects or other arrows; or, after being shot into a game animal. No list can cover all possible conditions and situations that may cause damage. Use good judgment and common sense, as well as follow the warnings and instructions below, to determine if your arrow has been damaged in any way. **WARNING! NEVER SHOOT A DAMAGED ARROW.**

### ARROW USE PRECAUTIONS

Before each shot (including the first shot of a new arrow) carefully inspect each arrow shaft and all arrow components to see that they have not been damaged. Place the arrow between your thumb and fingers, and using your other hand to slowly rotate the shaft, run your fingertips along the entire arrow length, feeling and looking closely for nicks, cracks, splits, dents, or other marks that could indicate the shaft has been damaged (see arrow inspection information at [www.eastonarchery.com/warning-use/](http://www.eastonarchery.com/warning-use/)). If your arrow is crested, inspect for damage on the crest surface and for any soft spots under the crest wrap. You may need to remove the cresting to make a thorough inspection. If damage is present, DISCARD THE ARROW.

**WARNING! NEVER SHOOT A DAMAGED ARROW.**

A loose or damaged nock may indicate a damaged arrow shaft or otherwise be dangerous. Before each shot, inspect the nock for damage and check that it is fully seated, and fits tightly in the shaft. Apply twisting pressure to see if the nock turns easily. If the nock has backed out of the arrow or turns easily, inspect for cracks in the arrow shaft. If there are cracks in the arrow shaft, or if the nock is loose or is damaged, DISCARD THE ARROW.

**WARNING! NEVER SHOOT AN ARROW WITH A LOOSE OR DAMAGED NOCK.**

### BOW INSPECTION

Before shooting any arrow, it is critical to inspect your bow, including all components, to be sure that it is properly adjusted and in good working order. Arrows should only be used with bows that have a correct pull weight and draw length (see arrow selection chart at [www.eastonarchery.com/shaft-selector/](http://www.eastonarchery.com/shaft-selector/)). Selecting the correct arrow and arrow length for the bow is the responsibility of the shooter, and failure to do so could result in personal injury and/or equipment damage. **WARNING! NEVER SHOOT AN ARROW WITH AN IMPROPERLY ADJUSTED OR DAMAGED BOW.**

## ADDITIONAL TESTS FOR CARBON ARROWS

When checking carbon arrows, perform the following additional tests:

1. Grasp the shaft just above the point and below the nock, then flex the arrow in an arc (bending it away from you and others) with a deflection of 1 to 2 inches (2.5 to 5 cm), and feel, look and listen for cracking (Figure 1). Perform this test 4 to 6 times, rotating the arrow slightly between each flex until you have gone around the entire arrow. If you hear or feel cracking, the carbon has been damaged, DISCARD THE ARROW. **WARNING! NEVER SHOOT A DAMAGED ARROW.**



FIGURE 1

2. While still holding the point and fletching ends of the arrow, twist the shaft in opposite directions (Figure 2). If the arrow "relaxes" or twists easily, the carbon has been damaged. DISCARD THE ARROW. **WARNING! NEVER SHOOT A DAMAGED ARROW.** A damaged arrow could break upon release and injure you or a bystander. If you have any reason to believe that an arrow has been damaged, DISCARD THE ARROW. **WARNING! NEVER SHOOT A DAMAGED ARROW.**



FIGURE 2

### CARBON ARROW CUTTING

Only cut a carbon arrow using a high-speed arrow cut-off saw. Using any other saw or cutting device may cause damage to the arrow. If an arrow has been cut without using a high-speed arrow cut-off saw, DISCARD THE ARROW. **WARNING! NEVER SHOOT A DAMAGED ARROW.**

### SOLVENTS

CAUTION: When removing fletchings, or for any other reason, do not soak any carbon arrow shaft in solvents. This can weaken the resin that bonds the carbon fibers. (For directions on arrow set up, refer to the the Easton Tuning Guide.)

**WARNING! NEVER SHOOT A DAMAGED ARROW.**

**To reduce your risk of serious injury or death, you must read and understand all safety warnings and instructions. If you do not understand these instructions, or cannot adequately perform the above tests, STOP and seek appropriate assistance before shooting any arrow.**



**WARNING:** Cancer and Reproductive Harm — [www.P65Warnings.ca.gov](http://www.P65Warnings.ca.gov)

Some of the products listed in this Product Guide may be subject to California Proposition 65 warnings requirements. See product packaging or website for specific warning information. This Product Guide is intended for informational purposes only, not a solicitation for product sales.



**Thirty medals.  
One arrow.**



Once again Easton is used to win every archery medal at the Summer Games.





**BOWHUNTING SINCE 1922**

