



**WNS**

**Quality Products For all**  
by WIN&WIN

**2022**  
PRODUCTS CATALOG



# WNS

## WNS 2022 PRODUCTS LINE UP

### CONTENTS

#### SF Line

APEX-GX	06
VULCAN X	07
APEX G9	08
TRINITY C6	09
SF ACCESSORIES	10
SF ARROWS	12

#### WNS Series

RISERS	16
LIMBS	24
ACCESSORIES	36





SF Line

**NANO CARBON**  
**TECHNOLOGY**



SF CARBON RISER

# APEX-GX



APEX-GX Riser is designed with graphene nano-carbon technology to improve the arrow grouping by reducing the shock and vibration at the time of release.

In addition, the height of the cushion plunger can be adjusted between two levels to accommodate any type of arrow to be fine tuned by applying the rest plate system.

### Technical Specifications

LENGTH	25 inches
WEIGHT	1320±10g
TYPE	RH/LH
MATERIAL	Graphene-Carbon

#### COLORS



SF Aluminum RISER

# VULCAN X



VULCAN X riser is made with carefully selected aluminum material. Its unique design emphasizes on balance and is engineered to deliver consistent feedback while shooting.

In addition, the height of the cushion plunger can be adjusted between two levels to accommodate any type of arrow to be fine tuned by applying the rest plate system.

### Technical Specifications

LENGTH	25 inches
WEIGHT	1250±10g
TYPE	RH/LH
MATERIAL	Aluminum / CNC machining

#### COLORS





SF New Limbs

# APEX G9



APEX G9 limbs are designed with graphene nano-carbon technology to have excellent Anti-torsional rigidity in order to offer a powerful shooting experience. The reverse curve design provides maximum smoothness while drawing to offer excellent performance even during high-level competitions.

## Technical Specifications

LENGTH	Short / Medium / Long
WEIGHT	24-48 lbs
FIBER	Graphene Carbon Fiber
CORE	Foam Core

SF New Limbs

# TRINITY C6



Trinity C6 limbs offer excellent smoothness in drawing by applying nano-carbon and high-foam core technology, allowing for a flexible and comfortable shooting experience.

## Technical Specifications

LENGTH	Short / Medium / Long
WEIGHT	22-46 lbs
FIBER	Cabon Fiber
CORE	Foam Core



# Highly durable 3k carbon fabric surface

# SMC 15

SMC 15 is SF's revolutionary new stabilizer constructed from modern high tensile strength carbon, making it stronger and stiffer. With its highly durable 3K carbon fabric surface, the SMC stabilizing system has improved dampening qualities, shock absorbance and torque control. Unlike other stabilizers the thickness of the SMC tube wall varies, helping it to absorb high levels of shock very quickly. The rod wall measures 0.0275" (0.7mm) at the front and 0.0787" (2mm) at the base. This creates reduces movement at the end of the rod and absorbing vibration throughout the length of the stabilizer rather than pushing it back into the bow.

### PRODUCT SPECIFICATION

Long	26, 28, 30, 32 or 34"
Short	10,11,12,14 or 15"
Extender	3, 4, 5, 6"

### COLORS



## SMC V-BAR

Multi coated all carbon structure enables durability and great vibration dampening properties. Recommended with the use of the SMC Carbon Stabilizer for an optimized accuracy.

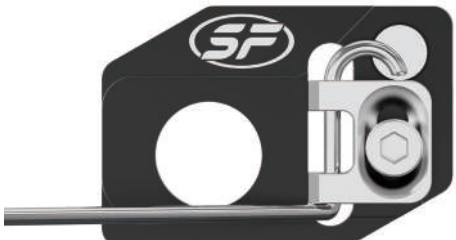
Available in 40 or 45 degrees



LONG

SHORT

EXTENDER



## APEX SIGHT

APEX Carbon Sight utilizes an extension bar which combines nano-carbon and special form cores to reduce shock more effectively. Sophisticated design along with precisely processed click-type adjustment system enables quick, fine control with better accuracy.

### COLORS



## APEX PLUNGER

Well-engineered from high-quality components, the APEX Cushion Plunger has a very smooth button action and micro click adjustments for fine bow tuning.

### PRODUCT SPECIFICATION

Weight	29.5 g
Thread Size	5/16"-24
Adjustmentable Length	min 24.0mm – max 29.0mm (29mm pressure point) min 17.5mm – max 24.0mm (24mm pressure point)

### COLORS



## APEX CARBON CLICKER

SF's Carbon Clicker is light, precise and designed to fit snugly onto any riser. The matt black carbon blade gives a clear 'click' on every shot.

### PRODUCT SPECIFICATION

SIZES	6-32, 4-40 or M4
Material	Carbon

## APEX REST

APEX Rest allows for maximum arrow clearance with its minimalist design. The height of the rest can be easily adjusted.

### PRODUCT SPECIFICATION

Weight	29.5 g
Type	RH/LH

### COLORS





Stability & Durability for Competitions

# LEONYS

## THE ULTIMATE RECURVE COMPETITION SHAFT

High-modulus carbon shaft creates precision and durability. Components engineered to match the performance of this target shaft provide the ultimate in clearance, finger release forgiveness for recurve bows.

### PRODUCT SPECIFICATION

Straightness	± 0.0015
Length	31 to 33 inches
Inner Diameter	3.65 mm

### COMPONENTS



LEONYS Break-off Point (Stainless Steel)  
80/90/100, 100/110/120



LEONYS Aluminum Pin  
9 grains



LEONYS Pin Nock



EXIST Pin Nock

**SHAFT Only** \* Offered with pins

Size	Shaft Weight (Grains Per Inch)	Stock Length (Inches)	Recommended Point Weight Range (Grains)
1200	4.73	31	80-100
1100	4.97	31	80-100
1000	5.30	31	80-100
900	5.63	31	80-100
800	6.22	31	80-100
700	6.69	33	100-120
600	7.78	33	100-120
500	9.50	33	100-120
400	9.81	33	100-120

WARNING CHECK FOR DAMAGE  
BEFORE SHOOTING

ACCURACY & DURABILITY

500

LEONYS



NANO CARBON TECHNOLOGY

WNS

SPEED & EFFICIENCY

500

LEONYS



NANO CARBON TECHNOLOGY

A Quality arrow for target

# SPINEL

## IDEAL CHOICE FOR TARGET ARCHERY

Made with WIAWIS' superior carbon construction, SPINEL gives archers a lightweight, smaller diameter arrow choice that is ideally suited for target archery.

### PRODUCT SPECIFICATION

Straightness	± 0.003
Length	31 to 33 inches
Inner Diameter	3.65 mm

### COMPONENTS



LEONYS Break-off Point (Stainless Steel)  
80/90/100, 100/110/120



LEONYS Aluminum Pin  
9 grains



LEONYS Pin Nock



EXIST Pin Nock

**SHAFT Only** \* Offered with pins

Size	Shaft Weight (Grains Per Inch)	Stock Length (Inches)	Recommended Point Weight Range (Grains)
1200	4.73	31	80-100
1100	4.97	31	80-100
1000	5.30	31	80-100
900	5.63	31	80-100
800	6.22	31	80-100
700	6.69	33	100-120
600	7.78	33	100-120
500	9.50	33	100-120
400	9.81	33	100-120

WARNING CHECK FOR DAMAGE  
BEFORE SHOOTING

ACCURACY & DURABILITY

500

SPINEL



NANO CARBON TECHNOLOGY

WNS

SPEED & EFFICIENCY

500

SPINEL



NANO CARBON TECHNOLOGY



Carbon Extreme Component

# EXIST

BIG INNOVATION, BIG WINS!

EXIST target shaft was a small diameter, 100% high modulus carbon. The constructs processtighter tolerances, couled with the top components, give you exceptional long range accuracy and very good wind flight.

PRODUCT SPECIFICATION

Straightness	± 0.003
Length	29 to 32 inches
Inner Diameter	4 mm

COMPONENTS

EXIST Break-off Point (Stainless Steel)  
70/80/90, 80/90/100, 100/110/120

METIX One-piece Point (Stainless Steel)  
70, 90

EXIST Aluminum Pin  
9 grains

LEONYS Pin Nock

EXIST Pin Nock

METIX In Nock

**SHAFT & ARROW** \* SHAFT Offered with pins  
\* ARROW Supplied unattached EXIST Break-off point as recommended weight

Size	Shaft Weight (Grains Per Inch)	Shaft Stock Length (Inches)	Arrow Length (Inches)	Recommended Point Weight Range (Grains)
1500	4.03	29	29	70-90
1400	4.23	29	29	70-90
1300	4.30	29	29	70-90
1200	4.67	31	29	80-100
1100	4.90	31	29	80-100
1000	5.23	31	29	80-100
900	5.53	31	29	80-100
800	6.12	33	30	100-120
700	6.86	33	30	100-120
600	7.45	33	31	100-120
500	8.00	33	31	100-120
400	8.93	33	32	100-120

The Best Accuracy right to your target

# METIX

STABILITY & DURABILITY  
FOR COMPETITIONS

Featuring an extra-light weight, high durability and the highest concentration of carbon in its construction, the METIX arrows have a consistent spine for the best accuracy right to your target.

PRODUCT SPECIFICATION

Straightness	± 0.005
Length	29 to 32 inches
Inner Diameter	4 mm

COMPONENTS

EXIST Break-off Point (Stainless Steel)  
70/80/90, 80/90/100, 100/110/120

METIX One-piece Point (Stainless Steel)  
70, 90

EXIST Aluminum Pin  
9 grains

LEONYS Pin Nock

EXIST Pin Nock

METIX In Nock

**ARROW Only** \* ARROW Full assembled

Size	Shaft Weight (Grains Per Inch)	Stock Length (Inches)	Recommended Point Weight Range (Grains)	Assembled Point Weight (Grains)
1800	3.67	29	70-90	70 One-piece
1500	4.03	29	70-90	70 One-piece
1400	4.23	29	70-90	70 One-piece
1300	4.30	29	70-90	70 One-piece
1200	4.67	29	80-100	90 One-piece
1100	4.90	29	80-100	90 One-piece
1000	5.23	29	80-100	90 One-piece
900	5.53	29	80-100	100 Break-off
800	6.12	30	100-120	100 Break-off
700	6.86	30	100-120	100 Break-off
600	7.45	31	100-120	120 Break-off
500	8.00	31	100-120	120 Break-off
400	8.93	32	100-120	120 Break-off



**WNS**

Quality Products For all  
by **WIN&WIN**





# FC-100



The light, high-performance FC-100 riser is designed around two carbon frames that maximize its strength at the moment it is shot. Built from royal cross carbon and carbon U/D using WIN&WIN advanced material technologies, the FC-100 can be aligned and centre-shot adjusted while the bow is strung.

## Technical Specifications

LENGTH	25 inches
WEIGHT	1100 g
TYPE	RH/LH
MATERIAL	Nano Carbon

### COLORS



CARBON BLACK MATT   RED   BLUE   WHITE



# VANTAGE-AX



The Vantage AX is a premium aluminum riser engineered by CNC technology designed to utilize maximum potential of any limb functionality. A modern style of matte anodized dark color finish has also been added.

## Technical Specifications

LENGTH	25 inches
WEIGHT	1210 g
TYPE	RH/LH
MATERIAL	Aluminum / CNC machining

### COLORS



MATT DARK RED   MATT ORANGE   MATT BRONZE   MATT DARK BLUE   MATT GRAY   MATT BLACK



Wooden grip  
(sold seperately)





# MOTIVE-FX

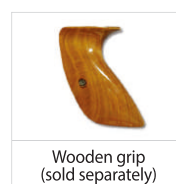


MOTIVE FX riser has already achieved unprecedented levels of performance by many archers standing on podiums and they continue to be favoured all over the world. The combination of computer-aided design and top tier machining is the result of extremely high specifications. A light-weight riser available in both 23 and 25 inches.

## Technical Specifications

LENGTH	23/ 25 inches
WEIGHT	1020 / 1100 g
TYPE	RH/LH
MATERIAL	Forged Aluminum / CNC machining

### COLORS



# DELTA-NX



Designed with simplicity and efficiency in mind, this riser comes with matt color finish. The DELTA NX riser will be your new partner throughout your archery progression. Available for right or left handed archers.

## Technical Specifications

LENGTH	25 inches
WEIGHT	1080 g
TYPE	RH/LH
MATERIAL	Forged Aluminum / CNC machining

### COLORS



# EXPLORE-DX



EXPLORE DX riser in its 21 inches version will allow youth or archers with short draw length to get the benefit of a fine engineered riser. 21 and 25 inches EXPLORE DX risers are ideal for up and coming archers.

## Technical Specifications

LENGTH	21/ 25 inches
WEIGHT	1060 g / 1120 g
TYPE	RH/LH
MATERIAL	Aluminum Diecasting

### ⚠ Caution

Don't set up the bow over than 40lbs. It may cause damage to the riser.

### COLORS



Perfect bow to start and progress!

# PROGRESSER



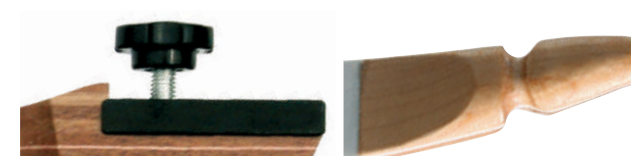
Progresser is the perfect bow to start and progress!

As light as accurate, this bow is being manufactured the same way than the others WNS Archery bow series (laminated wood riser, layers of wood and fiber glass into the limbs) and ready for an intense use as per the clubs. You will find all screw holes allowing the use of a sight, a stabilizer and a cushion plunger.

## Technical Specifications

LIMBS	HANDLE	WEIGHT (LBS)	TYPE
48 inches	14.5 inches	10~24	RH/LH
54 inches	19.5 inches	10~24	RH/LH
58 inches	19.5 inches	10~24	RH/LH
62 inches	20 inches	10~26	RH/LH
64 inches	22 inches	10~36	RH/LH
66 inches	24 inches	10~36	RH/LH
68 inches	24 inches	14~38	RH/LH
70 inches	24 inches	16~40	RH/LH

### DETAILS



### INCLUDED





W&W HMC 45° Carbon / CRS Foam

# FC-100



FC-100 limbs contain a CRS foam core to maximize their speed. They feature high modulus carbon as well as the 45-degree carbon pattern developed by specialized engineers to increase stability while shooting and to increase durability. You can feel the quality of WIN&WIN's high-technology within them.

Technical Specifications

LENGTH	Short / Medium / Long
WEIGHT	22-48
FIBER	W&W HMC 45 Carbon
CORE	CRS Foam



W&W RC Carbon / High Foam

# VANTAGE-G7



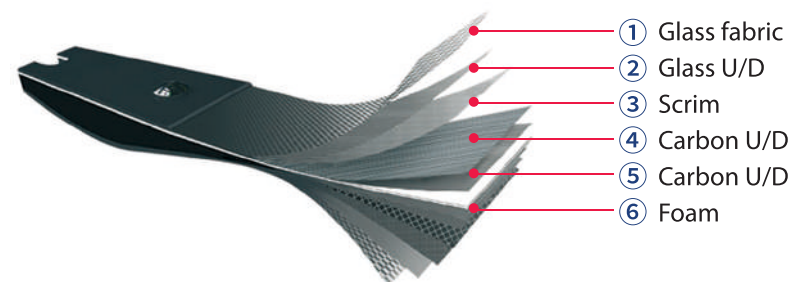
The Vantage G7 limbs contain WIN&WIN Royal Cross Carbon and High foam core which have proven their performance through previous WIAWIS limbs in history. The limbs were designed with a focus on durability and accuracy during the release. Suitable for competitions as they can obtain a balanced performance on all risers.

Technical Specifications

LENGTH	Short / Medium / Long
WEIGHT	22-46
FIBER	W&W RC Carbon
CORE	High Foam



## WIN UD Carbon / High Foam MOTIVE-C5



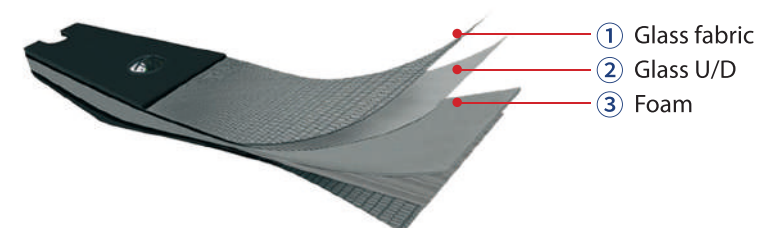
MOTIVE C5 limbs use carbon laminates with WIN&WIN unidirectional prepreg technology applied along with high foam core. Stable and pure carbon materials help keep the mass weight low as well as adding resistance to temperature and humidity changes giving them ideal performance even at competition settings.

### Technical Specifications

LENGTH	Short / Medium / Long
WEIGHT	20-44
FIBER	WIN U/D Carbon
CORE	High Foam



## WIN UD Glass / High Foam MOTIVE-F5



These high performance limbs are made of glass fiber with WIN&WIN unidirectional prepreg technology applied to realize better speed and torque control while shooting.

### Technical Specifications

LENGTH	Short / Medium / Long
WEIGHT	18-42
FIBER	WIN U/D Glass
CORE	High Foam





# DELTA C3/F3

DELTA C3 limbs utilize finest hard maple and WNS unidirectional carbon laminates to reduce vibration while shooting. Stability while shooting is also increased due to stiffer limb tip. DELTA C3 are perfect wood core limbs for intermediate archers whom are looking for accurate torque-free limbs.

## Technical Specifications

LENGTH	Short / Medium / Long
WEIGHT	18-42
FIBER	WNS U/D Carbon
CORE	Selected Wood

DELTA F3 limbs are made of high quality hard maple carefully selected and the most precise glass fabric applied with WNS unidirectional technology. They are appropriate for intermediate archers looking for clear feedback of their shot at the release.

## Technical Specifications

LENGTH	Short / Medium / Long
WEIGHT	18-42
FIBER	WNS U/D Glass
CORE	Selected Wood



# DELTA C2/F2

WNS unidirectional carbon laminates are used for DELTA C2 limbs. Foam cored DELTA C2 are highly recommended for archers who don't want to compromise accuracy at high speed.

## Technical Specifications

LENGTH	Short / Medium / Long
WEIGHT	18-42
FIBER	WNS U/D Carbon
CORE	Foam

Patterned taking into account durability, the DELTA F2 limbs also make good use of the foam core's characteristics which are speed and stability.

## Technical Specifications

LENGTH	Short / Medium / Long
WEIGHT	16-40
FIBER	Glass Fiber
CORE	Foam



# EXPLORE CW1/W1



EXPLORE CW1 limbs speed up on the features of existing EXPLORE W1 limbs by adding carbon material. Simply but neat design will make shooting more pleasure.

## Technical Specifications

LENGTH	Short / Medium / Long
WEIGHT	16-42
FIBER	WNS U/D Carbon
CORE	Wood

The combination of fiber glass along with two wooden layers makes the EXPLORE W1 limbs more comfortable as well as more accurate during shooting, even with low poundage. Traditional patterned EXPLORE W1 limbs are loved by many beginners and intermediates for a long time.

## Technical Specifications

LENGTH	Short / Medium / Long
WEIGHT	16-38
FIBER	Glass Fiber
CORE	Wood



# EXPLORE CB1/B1

EXPLORE CB1 limbs use bamboo which has the softest characteristics as the core and WNS unidirectional carbon laminates making them ideal for intermediate archers. Customized tips of limbs were made to increase stability.

## Technical Specifications

LENGTH	Short / Medium / Long
WEIGHT	16-42
FIBER	WNS U/D Carbon
CORE	Bamboo

EXPLORE B1 limbs are a bamboo core version of the EXPLORE series. They are smooth to draw by using more flexible bamboo core and they are the easier accessible limbs for all to start archery.

## Technical Specifications

LENGTH	Short / Medium / Long
WEIGHT	16-38
FIBER	Glass Fiber
CORE	Bamboo





are made of  
**Professionalism**  
& Strength

**WNS** BOW SPECIFICATIONS

**RISER** Technical Specifications

RISER	LENGTH	WEIGHT	TYPE	MATERIAL
APEX-GX	25 inches	1320 g	RH/LH	Graphene-Carbon
VULCAN X	25 inches	1250 g	RH/LH	Aluminum / CNC machining
FC-100	25 inches	1100 g	RH/LH	Nano Carbon
VANTAGE AX	25 inches	1210 g	RH/LH	Aluminum / CNC machining
MOTIVE FX	23 inches	1020 g	RH/LH	Forged Aluminum CNC
	25 inches	1120 g		
DELTA NX	25 incehs	1080 g	RH/LH	Forged Aluminum CNC
EXPLORE DX	21inches	1060 g	RH/LH	Aluminum Diecasting
	25 inches	1120 g		

**LIMBS** Technical Specifications

LIMBS	LENGTH	WEIGHT	FIBER	CORE
APEX G9	Short / Medium / Long	24-48 lbs	Graphene Carbon Fiber	Foam Core
TRINITY C6	Short / Medium / Long	24-46 lbs	Cabon Fiber	Foam Core
FC-100	Short / Medium / Long	22-48 lbs	W&W HMC45 Carbon	CRS Foam
VANTAGE-G7	Short / Medium / Long	22-46 lbs	W&W RC Carbon	High Foam
MOTIVE C5	Short / Medium / Long	20-44 lbs	WIN U/D Carbon	High Foam
MOTIVE F5	Short / Medium / Long	18-42 lbs	WIN U/D Glass	High Foam
DELTA C3	Short / Medium / Long	18-42 lbs	WNS U/D Carbon	Selected Wood
DELTA F3	Short / Medium / Long	18-42 lbs	WNS U/D Glass	Selected Wood
DELTA C2	Short / Medium / Long	18-42 lbs	WNS U/D Carbon	Foam
DELTA F2	Short / Medium / Long	16-40 lbs	Glsss Fiber	Foam
EXPLORE CW1	Short / Medium / Long	16-42 lbs	WNS U/D Carbon	Wood
EXPLORE W1	Short / Medium / Long	16-38 lbs	Glsss Fiber	Wood
EXPLORE CB1	Short / Medium / Long	16-42 lbs	WNS U/D Carbon	Bamboo
EXPLORE B1	Short / Medium / Long	16-38 lbs	Glass Fiber	Bamboo

**PROGRESSER** Technical Specifications

LIMBS	HANDLE	WEIGHT(LBS)	TYPE	LIMBS	HANDLE	WEIGHT(LBS)	TYPE
48 INCHES	14.5 inches	10~24	RH/LH	64 INCHES	22 inches	10~36	RH/LH
54 INCHES	19.5 inches	10~24	RH/LH	66 INCHES	24 inches	10~36	RH/LH
58 INCHES	19.5 inches	10~24	RH/LH	68 INCHES	24 inches	14~38	RH/LH
62 INCHES	20 inches	10~26	RH/LH	70 INCHES	24 inches	16~40	RH/LH





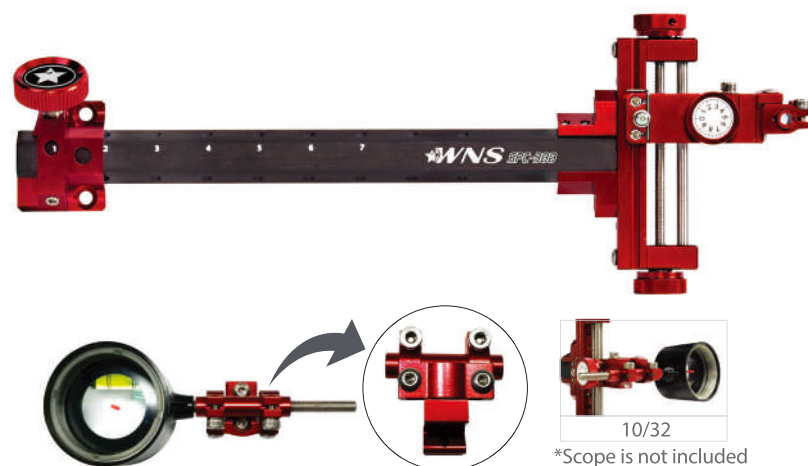
# WIN&WIN

## ACCESSORIES

Quality Products For all  
by WIN&WIN



## Well-Engineered WNS SIGHT

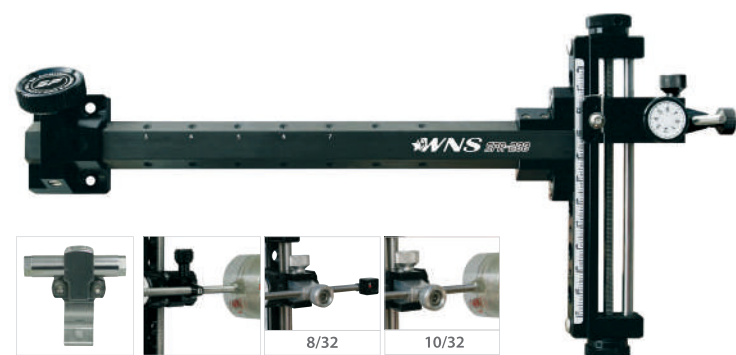


### SPC-300 SIGHT

SPC-300 SIGHT is developed for compound bows with all the advantages of SPR-200 SIGHT. Carbon extender, micrometer height and lateral adjustments, simple and clean fixation for scope pins.

SPC-300 is available in 4 colors, for left and right-handers and includes 1 eyelet support (10/32).

#### COLORS



Specific compound scope holder (Sold separately)

### SPR-200 SIGHT

SCP-200 Carbon fully inherits the benefits of the SRC-100 development. Carbon extender, micrometer height and lateral adjustments make this sight one of the greatest references!

SPR-200 is available in 4 colors, for left and right-handers, and includes 2 eyelet supports (8 and 10/32).

#### COLORS



### SPR-100 SIGHT

The SRC-100 Sight represents the new generation of WNS sights. Several months of development, including shooting machine tests resulted in the creation of this sight. It features a great ease of use, micrometer adjustments and an enhanced endurance. The double carbon/foam layer extender minimizes both weight and torque while shooting. The double guidance of the head (threaded rod/bar) enables a perfectly fluid movement.

SPR-100 is available in 4 colors, for left and right-handers and includes 2 eyelet supports (8 and 10/32).

#### COLORS



### SJA-50 SIGHT (LONG)

Aluminum extension and sight head created with durability and best quality in mind.

Available in right and left handed.

#### COLORS

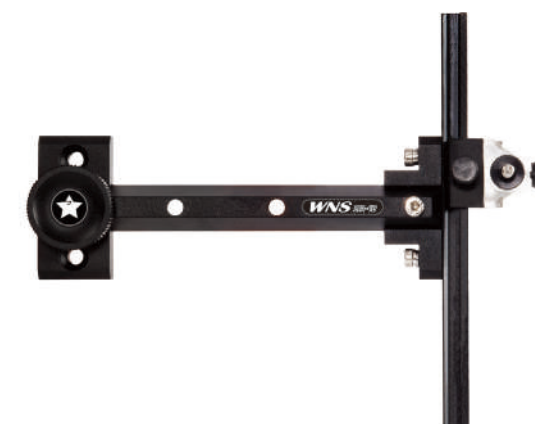


### SJA-40 SIGHT (SHORT)

Junior version of the SJA-50 sight. Extension shortened and lightened head, this sight is the ideal model to make yourself familiar with a competition sight.

Available in right and left handed.

#### COLORS

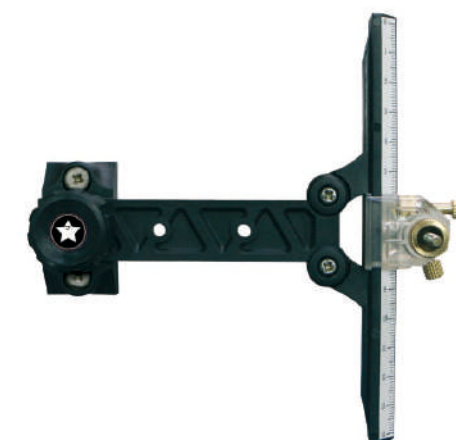


### SOP-10 SIGHT

SOP-10 sight is designed for beginners and intermediate archers.

Available in right and left handed.

#### COLORS



# SMC STABILIZER

SMC is WNS's revolutionary new stabilizer constructed from modern high tensile strength carbon, making it stronger and stiffer. With its highly durable 3K carbon fabric surface, the SMC stabilizing system has improved dampening qualities, shock absorbance and torque control. Unlike other stabilizers the thickness of the SMC tube wall varies, helping it to absorb high levels of shock very quickly. The rod wall measures 0.0275" (0.7mm) at the front and 0.0787" (2mm) at the base. This creates reduces movement at the end of the rod and absorbing vibration throughout the length of the stabilizer rather than pushing it back into the bow.

## PRODUCT SPECIFICATION

Long	26, 28, 30, 32 or 34"
Short	10,11,12"
Extender	3, 4, 5, 6"

COLOR : Carbon Black Glossy, Carbon Black Matt



# SVT STABILIZER

The SVT stabilizers series use a new carbon shaft in its inner structure which optimizes shocks absorbance and leads to a great level of comfort.

## PRODUCT SPECIFICATION

Long	26, 28, 30 or 32"
Short	10,11,12"
Extender	3, 4, 5"

Color : Matt Black, Black, Red, Blue, White



# SVT V-BAR

The SVT V-Bar is manufactured in multi-coated carbon for rigidity and endurance.

Available in 35, 40 or 45 degrees.



# S-LONG DAMPER

S-LONG Damper is made to be used on the riser to control dampening and absorbing vibrations better.

Available in 4 colors.

## COLORS





# SAT STABILIZER

The SAT stabilizers series is the perfect solution when you start archery. Light weight and fully adjustable, the system also improves dampening, absorbs shock and helps control torque during shooting. It comes in a wide range of colors and dampers.

## PRODUCT SPECIFICATION

Long	26, 28, 30 or 32"
Short	10, 12"
Extender	3, 4, 5"

Color: Black, Red, Blue, Silver

## SAT V-BAR

Anodised aluminum V-Bar.  
Available in 35, 40, 45 straight or 15 down.



## S-SHORT DAMPER

Made for side stabilizers, this short damper allows a perfect setup of the whole stabilizing system.

### COLORS



Long

Short

Extender

## S-PFC PLUNGER

Improved cushion plunger with neat design.  
Three different types of springs allow a tension adjustment from light to heavy pressure.

THREAD SIZE : 5/16"-24

### COLORS



## S-PEL PLUNGER

Easy tuning with a 'soft' spring mounted. While tuning the bow, if the arrow is too weak, make the cushion plunger stiffer and if the arrow is too stiff, make the cushion plunger weaker.

THREAD SIZE : 5/16"-24

### COLORS



## S-PLP PLUNGER

Efficient, accurate and easy to set up.

THREAD SIZE : 5/16"-24

TYPE : RH/LH

### COLORS





## S-RE REST

Features fully adjustable vertical and horizontal arrow positioning and variable weight arrow supporter.

TYPE : RH / LH

### COLORS



## S-RF REST

Simple and solid construction incorporating a magnetic system leading to an ultimate accuracy. This arrow rest provides you with the best arrow flight without any friction.

TYPE : RH / LH

### COLORS



## MAGNETIC CLICKER

This clicker enables the use of longer arrows as you can extend the length easily while keeping your accuracy.



## MECHANICAL CLICKER

Integrated plastic tip made to eliminate any friction on the arrow, matching all new generation risers.

Available in 6-32, M4 and 4-40 fixing screw.



## S-AL STAND

Latest development from WINNERS, the S-AL stand is lighter thanks to the use of anodized aluminum shafts as for its structure. As stable and quick to assemble as ever, it introduces a new U-shaped sitting cradle head for a better holding of the riser. Lastly, the shaft pinching the string has been renewed in order to be used with very short brace height bows.

### COLORS



## S-AT STAND

It's the perfect combination of stability and solidity along with a flip-lock legs system to fold up for easy storage.



## S-AX STAND

Solidly built and reliable bow support in all conditions. It is light yet strong and durable.

Suitable for both recurve and compound bows.

### COLORS





## BCY 8125 & 8190 STRING

Manufactured in Dynafight. Fast Flight reinforced loops.

- 64/14.64/16 WHITE/ORANGE
- 66/14.66/16 WHITE/RED
- 68/14.68/16 WHITE/GRAY
- 70/14.70/16 WHITE /BLUE



## FAST FLIGHT STRING

Manufactured in Fast Flight. Fast Flight reinforced loops.

- 64/14.64/16 WHITE/ORANGE
- 66/14.66/16 WHITE/RED
- 68/14.68/16 WHITE/GRAY
- 70/14.70/16 WHITE /BLUE



## DACRON B50 STRING

Superb durability in any condition. 12 strands.

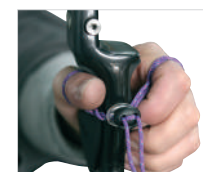
Available in length 48"/12strands to 70"/12strands.



## FINGER SLING

A sling is necessary for proper shooting, as the hand never holds the bow. The loop can be adjusted at your own size.

### COLORS



## BOW STRINGER

Assemble your bow in all safety with our new bow stringer. Both plastic molded ends enable a perfect holding and alignment, thus eliminating any risk of slipping on the limbs while stringing the bow. The length of the bow stringer can easily be adjusted to any bow sizes.

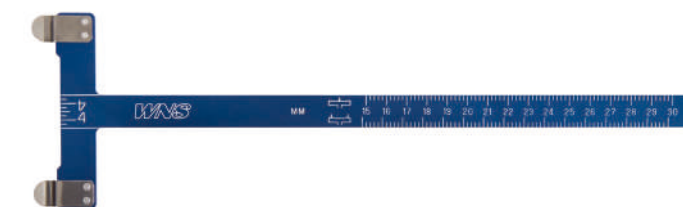


## T-GAUGE

12" blade with markings in metric and inches.

Large aluminum T-top for perfect nock placement, checking brace and tiller heights.

### COLORS



## SF-200 FINGER TAB

The aluminum plate makes the weight lighter and familiar with the archers. Cordovan is changeable. Removable retractor and chin piece.

SIZE : Small, Medium, Large, XLarge

TYPE : RH / LH

### COLORS



## SF-100 FINGER TAB

The aluminum plate makes the weight lighter and familiar with the archers. Superior leather (cow-hide) is changeable. Removable retractor and chin piece.

SIZE : Small, Medium, Large, XLarge

TYPE : RH / LH

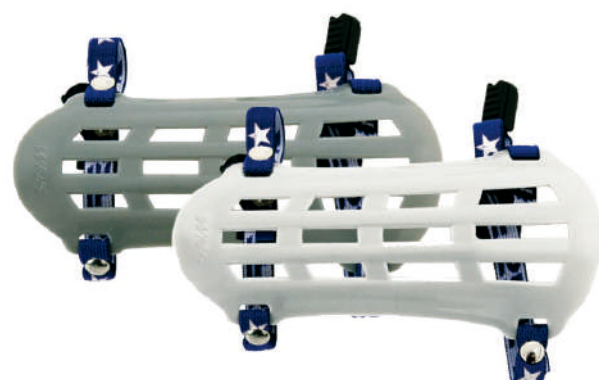
### COLORS



## S ARM GUARD

Made from a soft, comfortable material, it will provide a perfect protection from string rubbing.

### COLORS



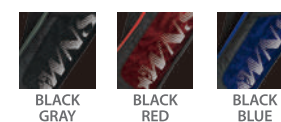
## S-300 QUIVER

High quality three-tube quiver featuring a stylish design, as strong as light.

Belt included.

RH / LH

### COLORS



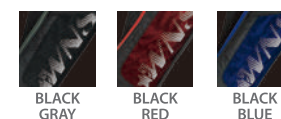
## S-200B FIELD QUIVER

S-200B field quiver has an attractive and simple design, a light weight and its pockets provide a great and handy storage space.

Belt included.

RH / LH

### COLORS

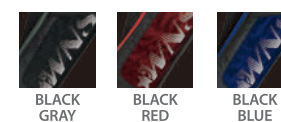


## S-100 QUIVER

S-100 quiver has three tubes, a pocket to store accessories and a clip to attach it to the belt.

RH / LH

### COLORS





## S-1 BOW BACKPACK

Latest addition to the WNS range, the S-1 BOW backpack can store a complete bow (up to 27 inches) plus all its accessories, quiver included! In addition to pockets disposed inside the front pouch, S-1 BOW backpack includes an arrow case, an inside bag for the riser, and storage compartments. It also features removable shoulder straps.

**DIMENSIONS** : 50" - (W)34.4cm × (D)21cm × (H)72.5cm

**INCLUDED** : Limbs & riser case / Arrows tube / Rain cover

### COLORS



BLACK



Quality Products For all  
by WIN&WIN

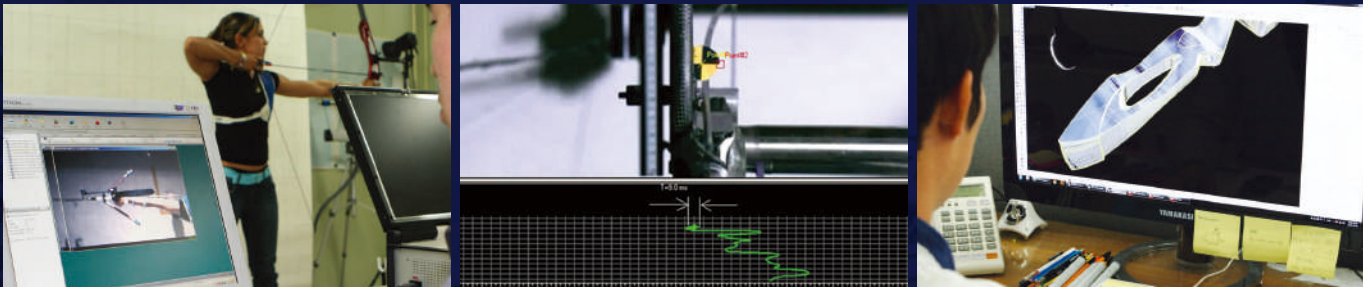


Made by archery experts, craftsmen and a high end production line.

# Made by Professionalism

# TECHNICAL WNS BOW by WIN&WIN

## #1 Collaboration of archery experts, engineers and designers.



## DESIGNED & MANUFACTURED by WIN&WIN

WIN&WIN CEO, Mr. PARK, Kyungrae, raised Korean archery to the top of the World yet unknown all around the world until the beginning of 1980's. He led the Korean team to success starting with a gold medal at the World Championships in 1985 & 1991 and the 1988 Olympics as the general head coach of Korean team. After that, he retired as Korean national team coach and established the present WIN&WIN Co. in 1993.

Based on his knowledge as well as his engineering skills, WNS products are designed and manufactured for all.

## #2 Managed and controlled in World's biggest production line.



WIN&WIN CEO

*Park, Kyus Ree*

## #3 After Sales Service available around of you.





