

**Department of School Education**  
Government of Tamil Nadu



# **CALENDAR FOR TEACHER PROFESSIONAL DEVELOPMENT 2022-23**





**CALENDAR FOR  
TEACHER  
PROFESSIONAL  
DEVELOPMENT  
2022-23**



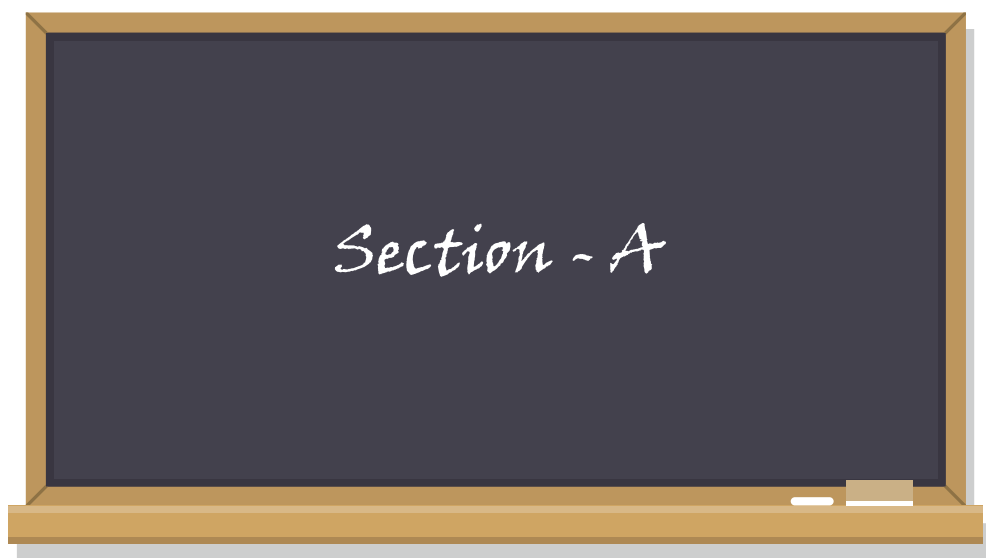
# CONTENTS

## Section - A

- I. Teacher Professional Development (TPD) Calendar - An Overview
- II. The TPD Calendar
  - 1. Calendar for Class 1 - 5
  - 2. Calendar for Class 6 - 8
  - 3. Calendar for Class 9 - 12
- III. Agenda & Schedule

## Section - B

- I. Professional Development Calendar
  - 1. HMs
  - 2. SCERT & DIETs



---

## Teacher Professional Development Calendar

### An Overview

---

The good thing about being a teacher is that it matters. The best thing about being a teacher is that it matters **everyday**.

The aim of the Teacher Professional Development programme of the School Education Department, Tamil Nadu is to provide an enabling ecosystem to each and every teacher of the State to do what they do best – awaken the love of learning in their students. The teacher is the master facilitator who shows you where to look but does not tell you what to see.

In the past two years, this function of the teacher was severely affected and teachers across the State in Tamil Nadu made the best of efforts to surmount the challenges prompted by COVID to reach the students in the remotest parts of the State- either directly wherever it was possible, or through remote learning processes, one of which was reaching out to their students through Kalvi TV- the School Education Department's own education channel. Their collective relentless effort of the teachers across the grades provided the much-needed support for students to remain connected with their learning processes.

With 2022-23 starting as a relatively more stable year and with schools having re-opened from November 2021 on a regular basis, the School Education Department envisages to systematize & streamline the professional development calendar for teachers for the coming academic year June 2022-23. The calendar for each group - primary, Upper primary, High & Higher Secondary Schools- has been organized under two categories - Essential & Programme-related. Essential focusses on professional development sessions that are applicable for all teachers and Programme -related refers to sessions that are for teachers who would be part of specific programmes- for ex: Career Guidance, Spoken English etc.

This Calendar is also focussed on aligning the continuous professional development sessions to regular classroom processes thereby providing the much-needed support to enhance the effectiveness of classroom practices as well as to address pedagogical challenges that may come up during the teaching process. Overall, the TPD Calendar is to provide all the teachers in the State with a time-line that will guide them to plan their individual learning & development plan on an ongoing-basis.

**Director**

**State Council for Educational Research & Training**



## The TPD Calendar

### 1. Calendar for Class 1-5 \*

18th June 2022 - 1 day		Essential (For All Teachers)	
Component	Venue	Mode of Delivery	Target Group
Cluster level meeting	Hi-Tech Labs in Cluster Schools	Blended (In person + Online)	All Govt & Govt aided School Teachers
16th July 2022 - 1 day			
Component	Venue	Mode of Delivery	Target Group
Cluster level meeting	Cluster resource centre	In person	All Govt School Teachers
27th August 2022 - 1 day			
Component	Venue	Mode of Delivery	Target Group
Cluster level meeting	Cluster resource centre	In person	All Govt School Teachers
8th October 2022 - 1 day			
Component	Venue	Mode of Delivery	Target Group
Cluster level meeting	Cluster resource centre	In person	All Govt School Teachers

## The TPD Calendar

12th November 2022 - 1 day

**Essential (For All Teachers)**

Component	Venue	Mode of Delivery	Target Group
Cluster level meeting	Cluster resource centre	In person	All Govt School Teachers

7th January 2023 - 1 day

Component	Venue	Mode of Delivery	Target Group
Cluster level meeting	Cluster resource centre	In person	All Govt School Teachers

18th February 2023 - 1 day

Component	Venue	Mode of Delivery	Target Group
Cluster level meeting	Cluster resource centre	In person	All Govt School Teachers

## The TPD Calendar

### 1. Calendar for Class 1-5 \*

6th -10th June 2022 - 5 days		Programme based (Select Teachers)	
Component	Venue	Mode of Delivery	Target Group
Ennum Ezhuthum	Block Level	In person	All Govt & Govt aided schools primary teachers handling Class 1 to 3 including BEOs
23rd and 24th June 2022 - 2 days			
Component	Venue	Mode of Delivery	Target Group
Spoken English	Block Level	In person	All Govt & Govt aided schools primary teachers handling Class 4 to 5 including BEOs



## The TPD Calendar

### 2. Calendar for Class 6-8

18th June 2022 - 1 day

**Essential (For all Teachers)**

Component	Venue	Mode of Delivery	Target Group
Block level meeting	Hi-Tech Labs in Cluster Schools	Blended (In person + Online)	All Teachers (Govt & Govt. aided schools)

16th July 2022 - 1 day

Component	Venue	Mode of Delivery	Target Group
Block level meeting	Block resource centre	In person	Subject-wise, All Govt School teachers handling class 6 - 8

27th August 2022 - 1 day

Component	Venue	Mode of Delivery	Target Group
Block level meeting	Block resource centre	In person	Subject-wise, All Govt School teachers handling class 6 - 8

8th October 2022 - 1 day

Component	Venue	Mode of Delivery	Target Group
Block level meeting	Block resource centre	In person	Subject-wise, All Govt School teachers handling class 6 - 8

## The TPD Calendar

### 2. Calendar for Class 6-8

12th November 2022 - 1 day

**Essential (For all Teachers)**

Component	Venue	Mode of Delivery	Target Group
Block level meeting	Block resource centre	In person	Subject-wise, All Govt School teachers handling class 6 - 8

7th January 2023 - 1 day

Component	Venue	Mode of Delivery	Target Group
Block level meeting	Block resource centre	In person	Subject-wise, All Govt School teachers handling class 6 - 8

18th February 2023 - 1 day

Component	Venue	Mode of Delivery	Target Group
Block level meeting	Block resource centre	In person	Subject-wise, All Govt School teachers handling class 6 - 8

## The TPD Calendar

### 2. Calendar for Class 6-8

17th June 2022 - 1 day		Programme based (Select Teachers)	
Component	Venue	Mode of Delivery	Target Group
STEM	District Level	In person	For all Govt School teachers handling Science & Maths (optional)
24th June 2022 - 1 day			
Component	Venue	Mode of Delivery	Target Group
Spoken English	Block resource centre	In person	All Govt school (classes 6-8) teachers handling English Subject
19th - 20th August 2022 - 2 days			
Component	Venue	Mode of Delivery	Target Group
Enabling Visually Challenged Teachers with ITC skills	Block resource centre	In person	All visually challenged teachers from Govt. Schools (6-12)

## The TPD Calendar

### 2. Calendar for Class 6-8

22 - 24th September 2022 - 3 days

**Programme based (Select Teachers)**

Component	Venue	Mode of Delivery	Target Group
Enabling Visually Challenged Teachers with ITC skills	Live Streaming through Zoom from DPI, Chennai	Online	All visually challenged teachers from Govt. Schools (6-12)

4th week of January 2023 - 6 days

Component	Venue	Mode of Delivery	Target Group
Archaeology	Archaeology Site	In person	1000 Selected Teachers

## The TPD Calendar

### 3. Calendar for Class 9 - 12

18th June 2022 - 1 day

**Essential (For all Teachers)**

Component	Venue	Mode of Delivery	Target Group
Block Level Meeting	Hi-Tech Lab	Blended (In person + Online)	All Teachers (Govt & Govt - aided Schools)

16th July 2022 - 1 day

Component	Venue	Mode of Delivery	Target Group
Block Level Meeting	Block resource centre	In person	Govt School Teachers handling Class 9 - 12

27th August 2022 - 1 day

Component	Venue	Mode of Delivery	Target Group
Block Level Meeting	Block resource centre	In person	Govt School Teachers handling Class 9 - 12

8th October 2022 - 1 day

Component	Venue	Mode of Delivery	Target Group
Block Level Meeting	Block resource centre	In person	Govt School Teachers handling Class 9 - 12

## The TPD Calendar

### 3. Calendar for Class 9 - 12

12th November 2022 - 1 day

**Essential (For all Teachers)**

Component	Venue	Mode of Delivery	Target Group
Block Level Meeting	Block resource centre	In person	Govt School Teachers handling Class 9 - 12

7th January 2023 - 1 day

Component	Venue	Mode of Delivery	Target Group
Block Level Meeting	Block resource centre	In person	Govt School Teachers handling Class 9 - 10

18th February 2023 - 1 day

Component	Venue	Mode of Delivery	Target Group
Block Level Meeting	Block resource centre	In person	Govt School Teachers handling Class 9

## The TPD Calendar

### 3. Calendar for Class 9 - 12

13th - 17th June 2022 - 5 days

**Programme based (Select Teachers)**

20th - 24th June 2022 - 5 days for 2 different batches

Component	Venue	Mode of Delivery	Target Group
Vocational Education	Regional training centre	In person	All existing Vocational education teachers

24th June 2022 - 1 day

Component	Venue	Mode of Delivery	Target Group
Spoken English	Block resource centre	In person	All Govt & Govt-aided school Teachers (class 9) handling English Subject

24th June 2022 - 1 day

Component	Venue	Mode of Delivery	Target Group
Career Guidance	HT Lab	In person	High and Higher Secondary School Teachers

## The TPD Calendar

### 3. Calendar for Class 9 - 12

19th & 20th August 2022 - 2 days

**Programme based (Select Teachers)**

Component	Venue	Mode of Delivery	Target Group
Enabling visually challenged teachers with ICT skills.	Block resource centre (Selected school)	In person	All visually challenged teachers from Govt. Schools (6-12)

22nd - 24th September 2022 - 3 days

Component	Venue	Mode of Delivery	Target Group
Enabling visually challenged teachers with ICT skills.	Live streaming through zoom from DPI, Chennai	Online	All visually challenged teachers from Govt. Schools (6-12)

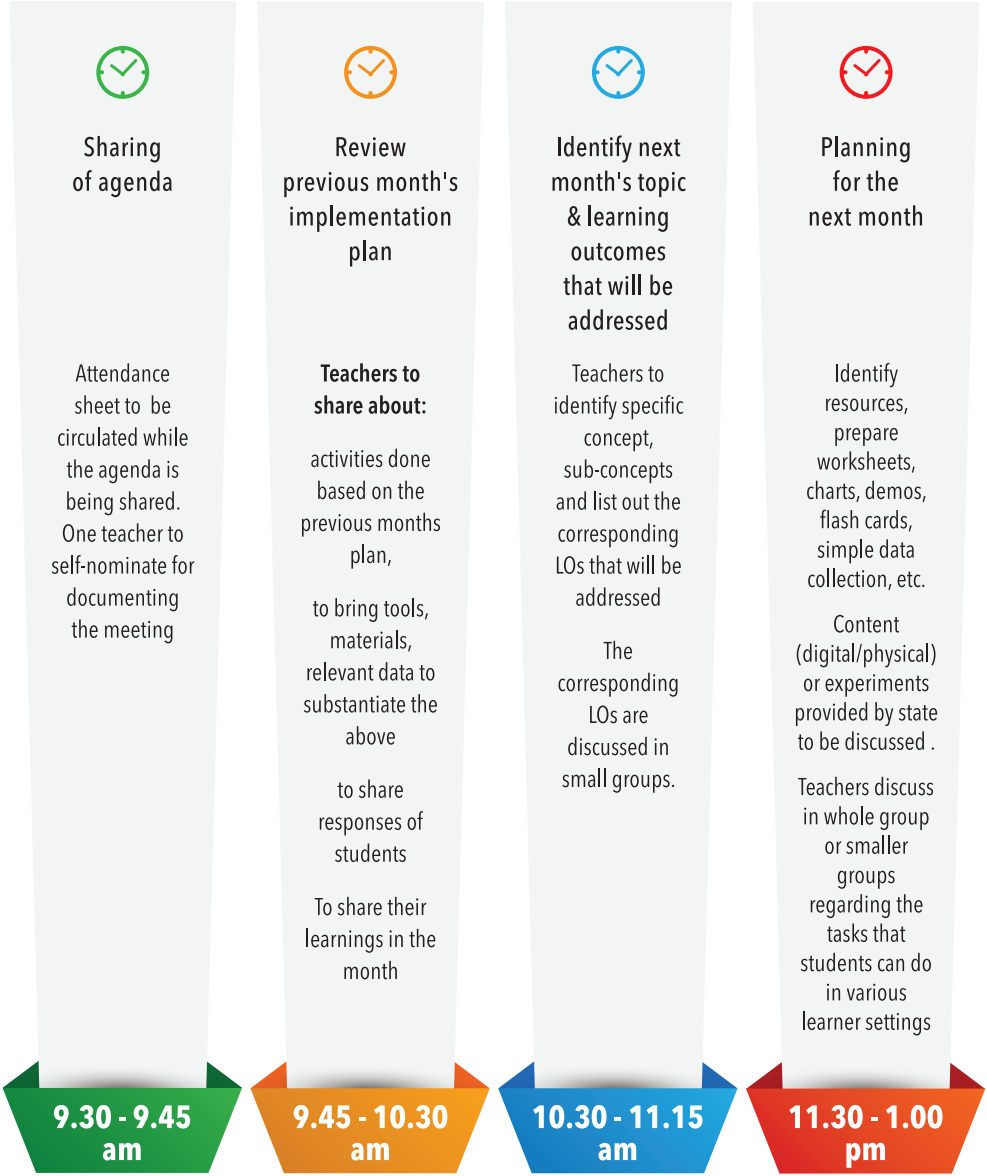
7th October 2022 - 1 day

Component	Venue	Mode of Delivery	Target Group
Career Guidance	HT Lab	In person	High and Higher Secondary School Teachers

2nd January 2023 - 1 day

Component	Venue	Mode of Delivery	Target Group
Career Guidance	HT Lab	In person	High and Higher Secondary School Teachers

# TPD Agenda & Schedule



## TPD Agenda & Schedule



### Finalising the next month's plan

Each group makes a presentation and all the activities are compiled based on the LOs in a pre-defined template.

**1.45 - 2.30 pm**



### Assessments

Developing ability-based questions based on concepts discussed

Curation of Questions

Orientation of tools

Short courses

Teachers discuss the revision questions that can be carried out weekly or fortnightly based on the assessment questions that are planned in the cluster meeting.

The best questions are then selected and compiled in the Assessment Cell.

**2.30 - 3.45 pm**



### Discussing challenges related to teaching-learning

Any session on pedagogy /teacher development etc.

**3.45 - 4.15 pm**

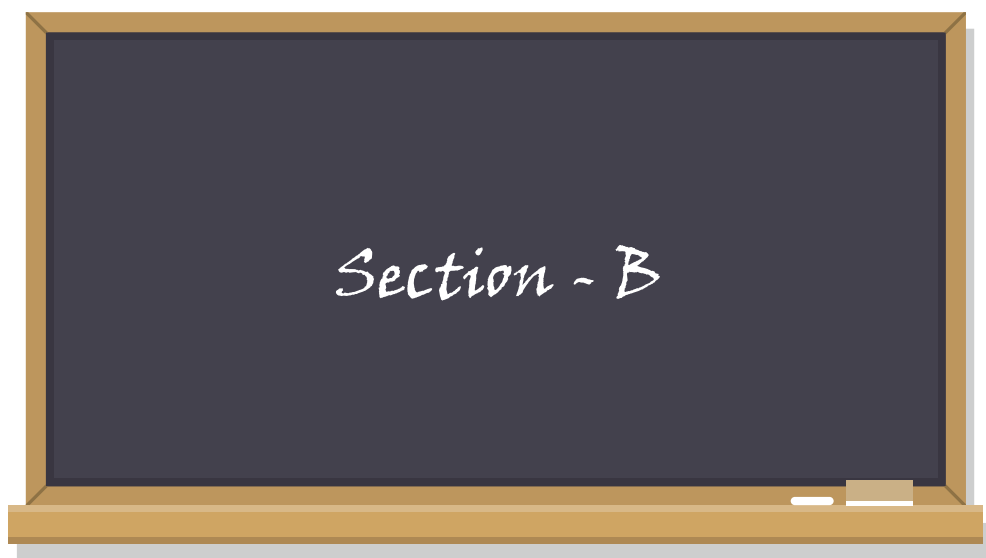


### Planning for next month's meeting-venue, facilitator etc.

Teachers will decide on next month's meeting venue, facilitator.

The filled template is uploaded and shared among all the teachers in the cluster. The resources in the uploaded template - content & assessments are then shared into a central pool that can be accessed by teachers across the State.

**4.15 - 4.30 pm**



## Professional Development - HMs

All High and Higher Secondary School HMs  
will be given 3 days of residential training in

School leadership

Academic Oversight

Community partnership

Planning

Resource Management

in the regional training venues

## SCERT & DIET Faculty

May 2022 - 3 days			
Component	Venue	Mode of Delivery	Target Group
Professional Development - Orientation	Regional training venue	In person	DIET & SCERT Academicians
June 2022 - 3 days			
Component	Venue	Mode of Delivery	Target Group
Professional Development - Orientation	Regional training venue	In person	DIET & SCERT Academicians
July 2022 - 3 days			
Component	Venue	Mode of Delivery	Target Group
Professional Development - Orientation	Regional training venue	In person	DIET & SCERT Academicians
August 2022 - 5 days			
Component	Venue	Mode of Delivery	Target Group
Professional Development - Essential	Regional training venue	In person	DIET & SCERT Academicians

## SCERT & DIET Faculty

September 2022 - 5 days

Component	Venue	Mode of Delivery	Target Group
Professional Development - Essential	Regional training venue	In person	DIET & SCERT Academicians

October 2022 - 5 days

Component	Venue	Mode of Delivery	Target Group
Professional Development - Essential	Regional training venue	In person	DIET & SCERT Academicians

November 2022 - 5 days

Component	Venue	Mode of Delivery	Target Group
Professional Development - Essential	Regional training venue	In person	DIET & SCERT Academicians

December 2022 - 5 days

Component	Venue	Mode of Delivery	Target Group
Professional Development - Essential	Regional training venue	In person	DIET & SCERT Academicians



## NOTES

This image shows a single sheet of white paper with horizontal ruling lines. The lines are evenly spaced and run across the width of the page. There are no margins, text, or other markings on the paper.





# Department of School Education

Government of Tamil Nadu